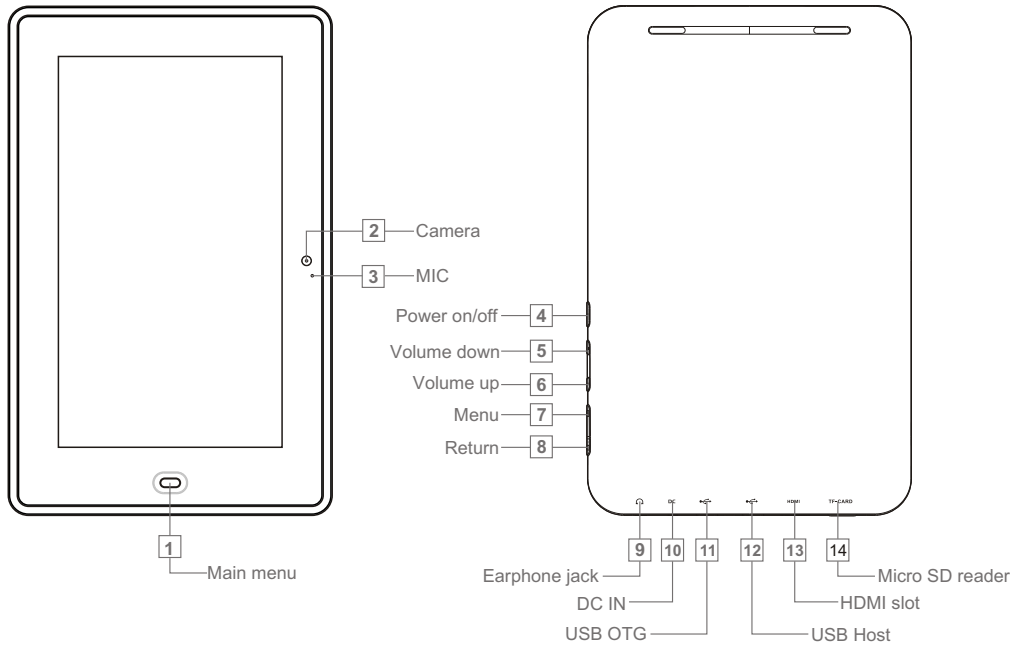


QUICK START GUIDE

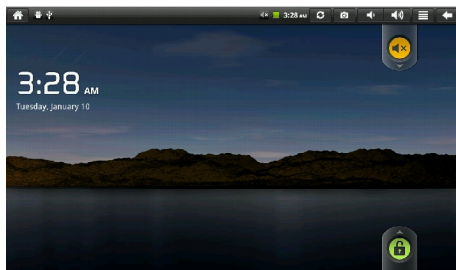
Model: ID706WTA

Know your tablet



Initial Experience


1. Press on Power button and hold for 3 seconds to turn on your device; “Android” logo will appear on the screen. The booting needs about 40 seconds, After booting finished, below screen will appear,



1

2. Slide the Lock icon to unlock the screen, then you will obtain the main menu as below:



Touch the button  as showed on above photo, you will obtain more APPs, Now, you can touch on the icons to enjoy your photos, music, video, e-books, games...

Networked Functions

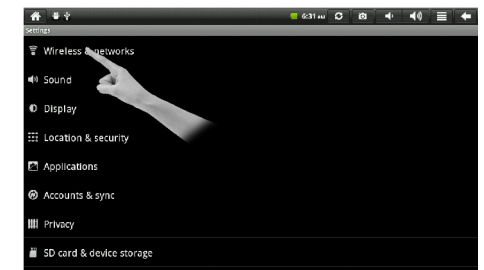
For networked functions, such as Browser, Map, Email, YouTube, Facebook, Market Place..., you need to link to internet firstly. Please operate as follow steps to setup your networks,

Starting from the main menu,

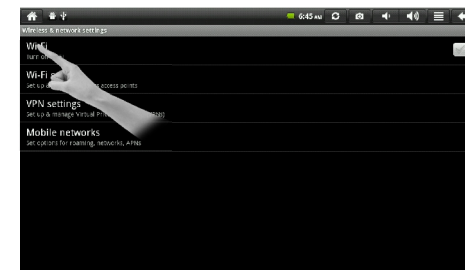
(1) Touch “Settings”,



(2) Touch “Wireless & networks”,



(3) Touch “Wi-Fi” and next line “Wi-Fi setting”.

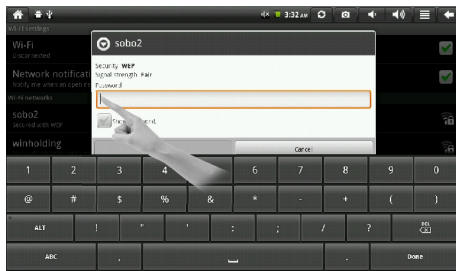


2

(4) Your tablet will search wireless routers in your surrounding, and your router will appear on the screen, touch on “Your Router”.

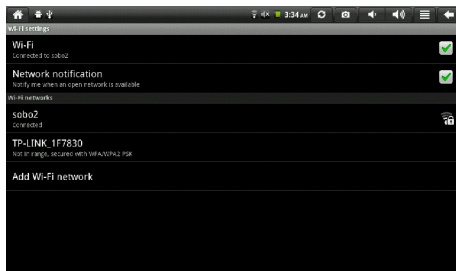


(5) If you did not set a password for your router, the tablet will link to internet automatically. If you have set a password for your router, the below square will appear on screen, touch on the Password bar,



(5) Soft Keyboard will appear on screen, input the password you set for your router, then, touch “Done” on the keyboard. Finally, touch “Connect”.

Now, you can see your router has been connected, which means your tablet has been linked to internet.



Now, you can enjoy all networked functions.

Tips for your tablet

1. Market

You will find “Market” icon on the APPs list. Market is a place you can download various applications that are developed with using Android's open source codes. You will find a lot of funs and useful applications.

Some applications have been designed to default to root on SD card, then, you need to insert your mini-SD card into the slot so as to make the application be able to work.

2. E-Books

This tablet has pre-loaded some e-book readers and e-book applications that are developed by the publishers such as Kobo, Nook, Kindle, wish you always can find the books you like.

3. Calibrate Screen

In case you find your touch on the screen can not create a corresponding action, or respond wrongly, you need to calibrate your screen.

On Main Menu, touch on “Settings” / “Touch Screen Calibrate” / , then, touch on each the “+” marks appeared in order on the screen, after that, you get the Settings Menu again, now the screen calibration ended.

Support

If you encounter an issue, resolve the issue in the following order.

1. Refer to the User's Manual.

- Go to www.sungale.com and click “Support”, then click “Manual Download” at the left side. You will find user manual with related model number (ID706WTA). Click “Manual Download-EN” to download the user manual

2. Visit the support site.

- For manual download and FAQs: www.sungale.com
- More supports about WIFI: www.sungalewifi.com

3. Contact Sungale Support team

- Toll Free Call in the USA: 800-473-5156
- Service email: info@sungale.com