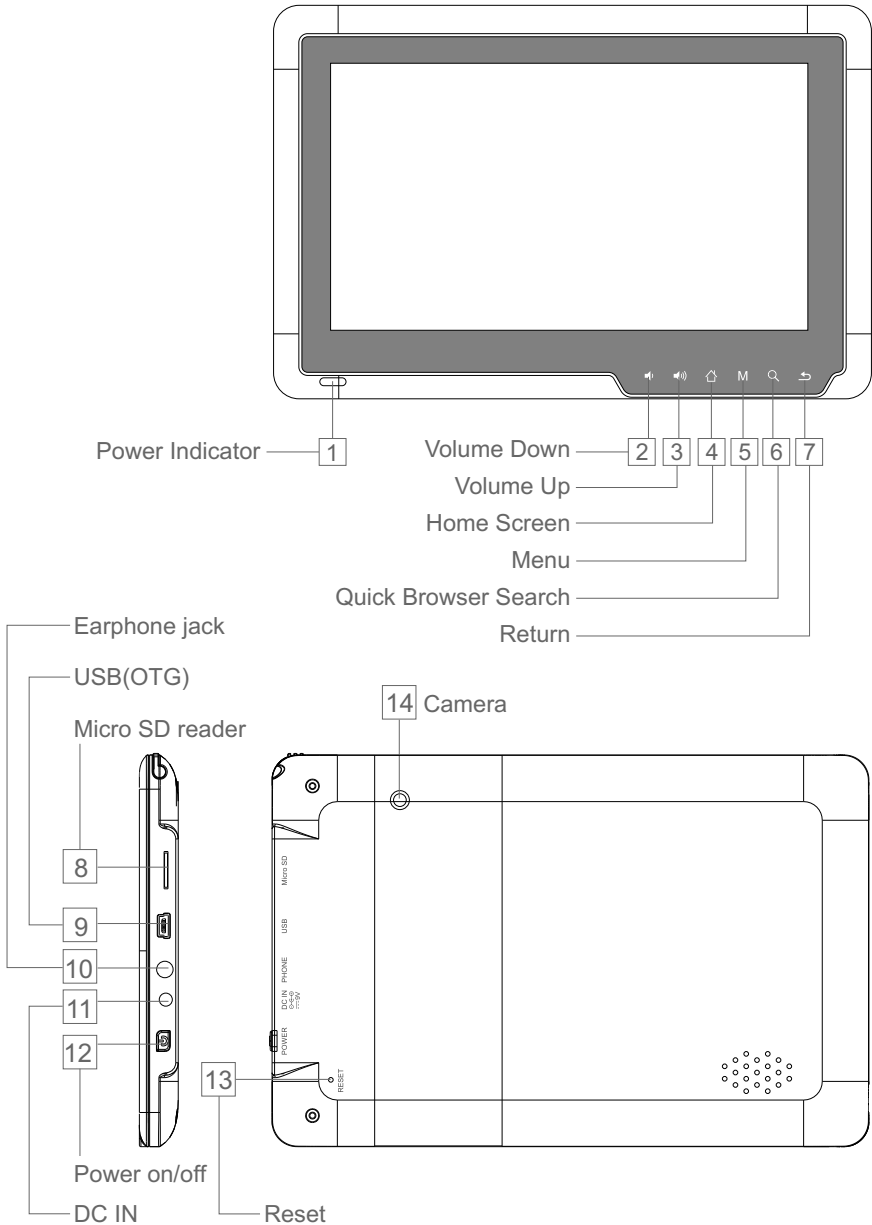


# QUICK START GUIDE

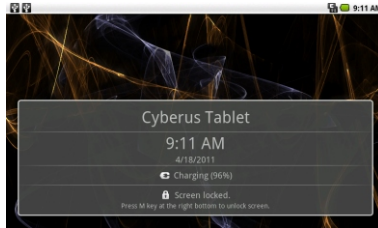
Model: ID707WTA

## Know your tablet

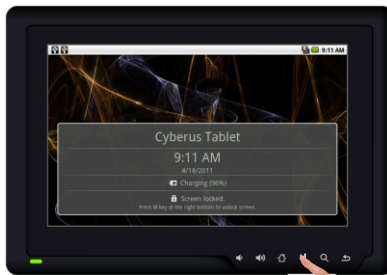


# Initial Experience

1. Press on Power button and hold for 3 seconds to turn on your device; “Booting” will appear on the up-left corner of the screen. Booting needs about 50 seconds, After booting finished, below screen will appear.



2. Press on Menu key to unlock the screen,



Then, you will obtain below screen;



We call this as “Main Menu”

» Now, you can touch on the icons to enjoy your photos, music, video, e-books, games...

3. Touch on the arrow as showed on above photo, you will obtain below screen,



» Now, you can touch on the icons to enjoy more APPS.

# Networked Functions

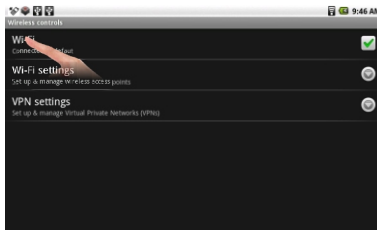
For networked functions, such as Browser, Map, Email, YouTube, Facebook, Market Place..., you need to link to internet firstly. Please operate as follow steps to setup your networks,

» Starting from the main menu,

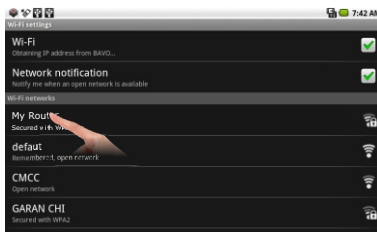
1. Touch “WifiSetting”,



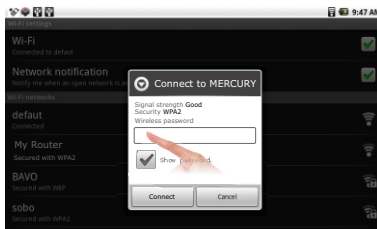
2. Touch “Wi-Fi” and next line “Wi-Fi setting”.



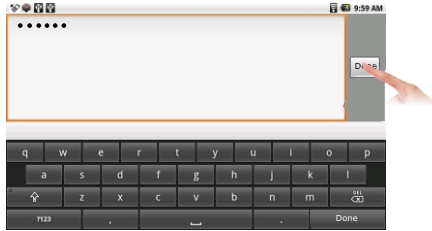
3. Your tablet will search wireless routers in your surrounding, and your router will appear on the screen, touch on Your Router.



4. If you did not set a password for your router, the tablet will link to internet automatically. If you have set a password for your router, the below square will appear on screen, touch on the Password bar,



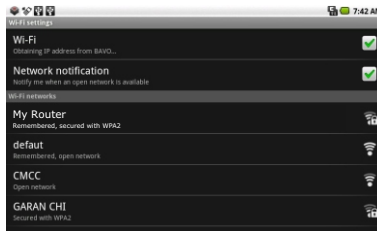
5. Soft Keyboard will appear on screen, input the password you set for your router, then, touch “Done” on the screen,



6. Below square will appear, touch on “Connect”,



- » Now, you can see your router has been connected, which means your tablet has been linked to internet.



- » Now, you can enjoy all networked functions.

## Tips for your tablet

### 1. Market

You will find “Market” icon on the Main Menu. Market is a place you can download various applications that are developed with using Android's open source codes. You will find a lot of funs and useful applications.

Some applications have been designed to default to root on SD card, then, you need to insert your mini-SD card into the slot so as to make the application be able to work.

## 2. E-Books

This tablet has pre-loaded some e-book readers and e-book applications that are developed by the publishers such as Kobo, Borders, Nook, Kindle, wish you always can find the books you like.

## 3. Calibrate Screen

In case you find your touch on the screen can not create a corresponding action, or respond wrongly, you need to calibrate your screen.

Touch on “Tools” / “Screen Calibrator” /, then, touch on each of the “+” marks appeared in order on the screen, after that, you will get the Main Menu again, now, the screen calibration ended.

Another way to calibrate screen is: Press  key twice, press  key twice, and press  twice again, then, a “+” mark will appear on the upper left corner of the screen, touch on each of the “+” marks appeared in order on the screen to finish screen calibration.



**We strongly suggest you insert a MiniSD card into your tablet. Most of apps can not PLAY without a SD card**

## Support

If you encounter an issue, resolve the issue in the following order.

### 1. Refer to the User's Manual.

- Go to [www.sungale.com](http://www.sungale.com) and click “Support”, then click “Manual Download” at the left side. You will find user manual with related model number (ID707WTA). Click “Manual Download-EN” to download the user manual

### 2. Visit the support site.

- For manual download and FAQs: [www.sungale.com](http://www.sungale.com)
- More supports about WIFI: [www.sungalewifi.com](http://www.sungalewifi.com)

### 3. Contact Sungale Support team

- Toll Free Call in the USA: 800-473-5156
- Service email: [info@sungale.com](mailto:info@sungale.com)