

Sungale

ID800WT



Digital Photo Frame User's Manual



Contents

User Notice

This product has met electronic emissions standards required. It can be used safely at home.



Before Operation

Product Introduction	2
Safety Precautions	3
Package Contents	5
Photo Frame Overview	6

Basic Operation

Power Connection	7
Insert a kind of memory card	8
Select a kind of storage	9
Photos	10
Music	11
Movie	12
E-Book	13
Calendar&Clock	14
Edit files	16

Advanced Operation

Settings	17
Network setting	20
IP Radio	23
Picasa	24
Weather	25
News	26
Gmail	27
Stock	28
YouTube	29
Connect PC	31

Customer Management

Question&Answer	32
Troubleshooting	33
Specifications	34

Before Operation

Product Introduction

Our Digital Photo Frame is a convenient image frame that keeps your favorite images at your fingertips.

Wi-Fi DPF means the digital photo frame can be connected to internet wirelessly, then, you can enjoy and share the endless resources from the internet.

with many various added functions such as, weather report, IP Radio, News, YouTube, Stock Gmail etc, you will achieve much more fun and convenience from the product.

Moreover, its touch screen operation makes it is a unique products distinguish it from any other products.

You can use the Digital Photo Frame to enjoy memories by presenting them with refined images.

Before Operations

Safety Precautions

Please read the following guidelines carefully to ensure user safety.

Power Precautions

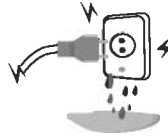
⚠ WARNING: indicates information that, if neglected, could result in serious injury and/or death to the user.

⚠ CAUTION: indicates information that, if neglected, could result injury to the user and/or material damage.

01. Use only the power supply included with your frame. Failure to do so may result in product malfunction.



02. When connecting your power source, make sure that your hands are free of moisture. Failure to do so could result in electrical shock.



03. Make sure that the power supply is firmly plugged in and not loose. Failure to do so could result in electrical shock.



04. Do not let the power cord get overly entangled and do not place any heavy objects on the cord. Failure to do so could result in electrical shock.



05. Do not connect the power supply to an electrical power strip with other various. Failure to do so could result in fire.



06. Disconnect the power supply during inclement weather conditions that include thunder and lightning. Failure to do so may result in fire.



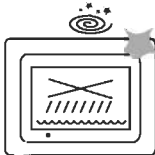
Before Operations

Safety Precautions

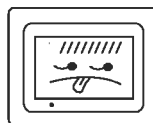
Please read the following guidelines carefully to ensure user safety and avoid malfunction.

Product Related Precautions

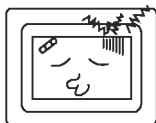
01. Dropping the product or subjecting it to a significant impact can cause critical damage.



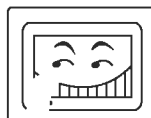
02. Spilling water or any other liquid on the product can cause critical damage.



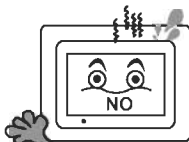
03. Striking or scratching the LCD screen may cause critical damage.



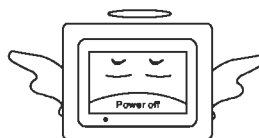
04. When cleaning the LCD screen, turn off the power and wipe it gently with a soft cloth.



05. Do not subject the product to severe humidity and/or heat.



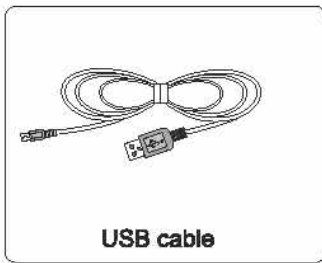
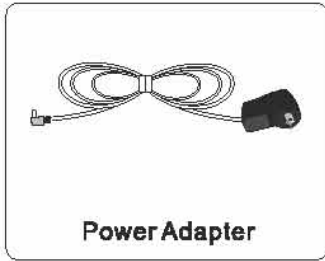
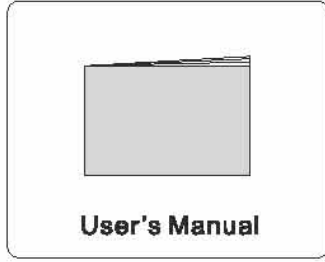
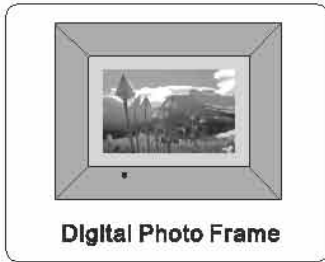
06. Make sure to power off the unit before disconnecting the power supply.



Before Operations

Package Contents

For the improvement of product performance and/or quality, the basic components may be modified without prior notice. The components may differ slightly in appearance with the provided images.

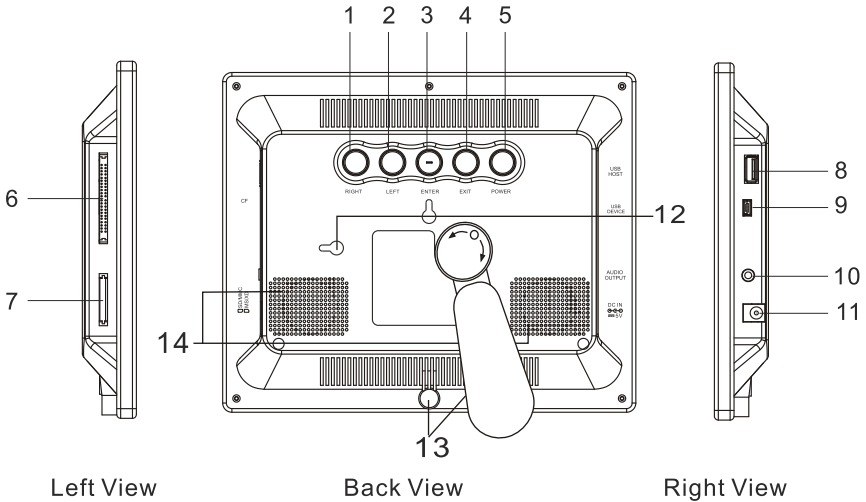


Before Operations

Photo Frame Overview

The package contents may differ slightly in appearance with the provided images

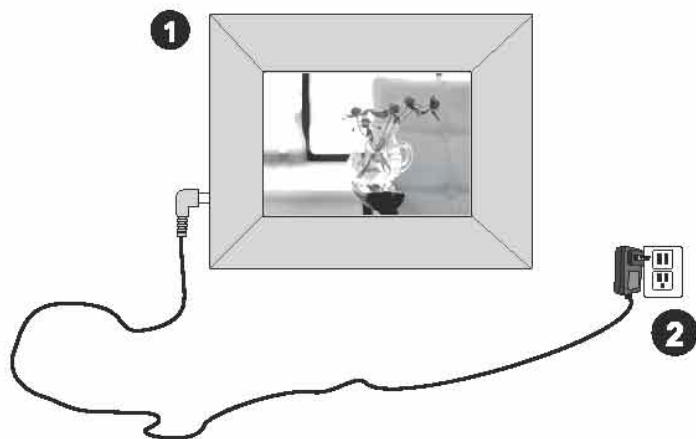
Note: This unit is a touch screen digital photo frame which brings convenience because of touch operation. Nevertheless, the buttons at the back of the frame can also be used in the operation.



1. **RIGHT:** Move the cursor to right or down
2. **LEFT:** Move the cursor to left or up
3. **ENTER:** Enter into the selected menu or start playing the selected file.
4. **EXIT:** Stop the current action and return to the previous menu.
5. **POWER:** Turn the player off and on .
6. **CF CARD SLOT:** Insert CF card here.
7. **MS/SD/MMC/XD CARD SLOT:** Insert supported memory card types here.
8. **USB HOST :** Connect the USB cable from the DPF player to USB removable storage device / Mobile hard disk.
9. **USB DEVICE:** Connect the photo frame to PC
10. Audio output.
11. **DC IN :** Insert the DC power adapter to the frame.
12. Wall mountable hole.
13. **Stand:** Using the stand provided you can position the photo frame with horizontal or vertical view.
14. **Speaker:** Built in stereo speakers.

Basic Operations

Power Connection



1. Connect the power adaptor to the DC 5V jack on the left side of the frame.
2. Plug in the power cord.
3. The frame will automatically power on.

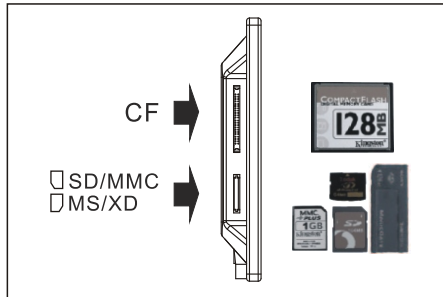
Note: When powering on the unit, it may be in a condition that some images moving across the screen. Please unplug the adapter and turn on the unit again.

Basic Operations

Insert a kind of memory card

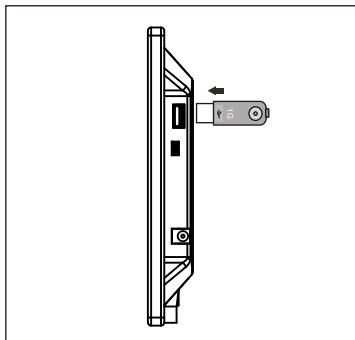
When inserting a memory card into the frame, refer to the image to make sure that both the memory card and the frame are aligned correctly (the side of the memory card on which sticker is affixed should face the frame).

CF, SD, Memory Stick, MMC cards, XD cards are compatible with this unit. Aligning the memory card upside down may cause user-error damage. This may nullify the warranty.



USB Removable Storage Devices

Insert USB removable storage devices (ie: flash drives) into the USB HOST port on the side of the frame.



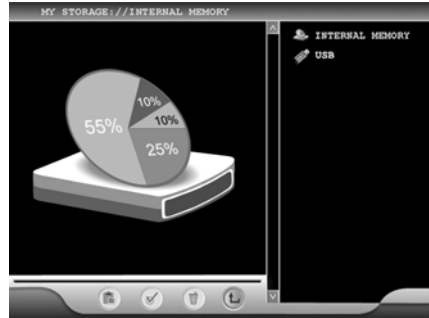
Removing the Memory Card

When removing a memory card from the frame, pull the card straight away from the unit. Avoid bending the card.

Basic Operations

Select a kind of storage

In the main menu mode, touch the STORAGE icon, and then enter the storage list mode.



In the storage list, double touch the file name or touch the preview of the designed item (Internal Memory/Memory Card/Flash Drive) to enter the file list.



Basic Operations

Photos

Photo Step Show

Tip 1: In the file list mode, touch the file name, there will be a small preview on the left interface. Touch the preview to enter into the large image preview mode as below. It will auto begin a single photo show if no operations in 5s.

Tip 2: in the file list mode, double touch the file name to enter into the large preview mode as below. It will auto begin a single photo show if no operation in 5s.



ICONS	MEANING
1	Entire image slide show
2	Skip to the previous image.
3	Skip to the next image.
4	Background music ON/OFF
5	Decrease the volume.
6	Increase the volume.
7	Exit

Photo Slide Show

In the photo step show mode, touch the icon of entire image slide show, the image will display in full screen one by one.

Displaying photos in background music

In the large image preview mode, touch the icon 4 to play music. It will auto begin a single photo show if no operations in 5s. Touch the icon 4 again to stop a music playing.

Touch the icon 4 and then touch the icon 1, it will begin a photo slide show in background music.



Note: Randomly touch the screen in the photo step show or slide show mode to return to the large image preview mode.

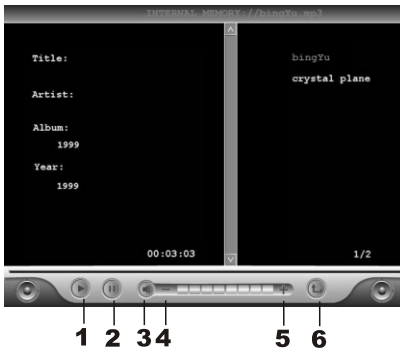
Basic Operations

Music

Tip1: In the file list, touch the desired music name to play. There will be a music icon on the left interface. Touch the music icon on the left to play music.

Tip2: In the file list, double touch the desired music name to play the music directly.

During playback, the right side is current music list, while the left side is the details of the music which is playing. Double touch the other music name to begin play the other music.



ICONS	MEANING
1	Play
2	Pause
3	Mute
4	Decrease volume
5	Increase volume
6	Exit

Pausing a song

During playback, touch the Pause icon to pause the song. And then touch the Play icon or double touch the music name to continue playing.

Mute Mode

During playback, touch the Mute icon to mute the sound. Touch the icon again to continue play the song.

Adjusting the volume

During playback, touch the "+" or "-" icon to increase or decrease the volume.

Exit

In the music interface, touch the Exit icon to return to the previous file list.

Basic Operations

Movie

Tip1: In the file list, touch the desired movie name to play. There will be a movie icon on the left interface. Touch the movie icon on the left to play movie.

Tip2: In the file list, double touch the desired movie name to play the movie directly.



Pausing a movie

During playback, touch the Pause icon to pause the movie. And then touch the Play icon to continue playing.

Adjusting the volume

During playback, touch the "+" or "-" icon to increase or decrease the volume.

Exit

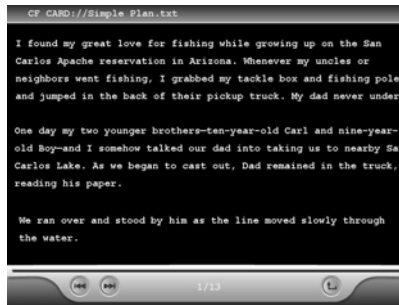
In the movie interface, touch the Exit icon to return to the previous file list.

Basic Operations

E-Book

Tip1: In the file list, touch the desired TXT file to read. There will be an E-Book icon on the left interface. Touch the E-Book icon on the left to enter the reading interface.

Tip2: In the file list, double touch the desired TXT file to read directly.



Previous Page

In the reading interface, touch ◀◀ to skip to the previous page.

Next Page

In the reading interface, touch ▶▶ to skip to the next page.

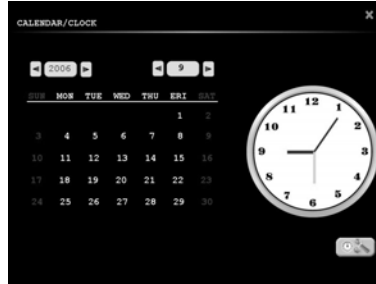
Exit

In the reading interface, touch the Exit icon to return to the previous file list.

Basic Operations

Calendar and Clock

In the main menu mode, touch the Clock icon, and enter into the Clock mode.




In the Calendar/Clock mode, touch the icons side by the Year to adjust the year, and touch the icons side by the Month to adjust the month.

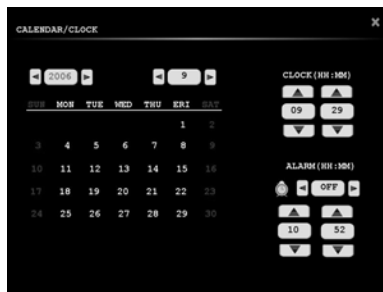
Note: Just adjust the calendar, you can't set calendar or clock in the mode.

Exit

In the Calendar/Clock interface, touch the "X" icon on the right top side to return to the main menu mode.

Setup

In the Calendar/Clock interface, touch the  icon to enter the setup mode.



Basic Operations

Calendar and Clock

Calendar Setting

In the Calendar/Clock setting mode, touch the icons side by the Year to set the right year; touch the icons side by the Month to set the right month; and touch the Date icon to set the date.

Clock Setting

In the Calendar/Clock setting mode, touch the icons on or below the time icons to set the right time.

Alarm Setting

In the Calendar/Clock setting mode, touch the icons side by the alarm mode icon to set the alarm on or off; touch the icons on or below the alarm time icons to set the desired alarm time.

Exit

After setting operation, touch the “X” icon on the right top side to return to the main menu mode.

Alarm Function

When it is the alarm time, the screen will enter into the alarm-ring mode and the alarm will ring. Touch screen to return to the main menu.

Note: Make sure the digital photo frame is working at the alarm time.



Basic Operations

Edit files

Copy and Paste Files

In the file list, touch to highlight the Select icon (the icon will turn orange after highlighting); select and touch the file desired to be copied in the file list on the right side, the selected file will turn red; continue touch the file name to select and copy more, the files which have been selected will turn blue.



ICONS	MEANING
1	Select
2	Paste
3	Delete
4	Exit

After selecting the desired files, touch the Exit icon to exit the list. Enter the desired storage, folder or list to paste files, and touch the Paste icon to paste files. There is a tip on the screen to show the copying progress.

After pasting, the interface return to the file list mode. The copied files will be found in the list.

Delete files

In the file list, touch to highlight the Select icon, the icon will turn orange after highlighting; select and touch the file desired to be deleted in the file list on the right side, the selected file will turn red; continue touch the file name to select and delete more, the files which have been selected will turn blue.

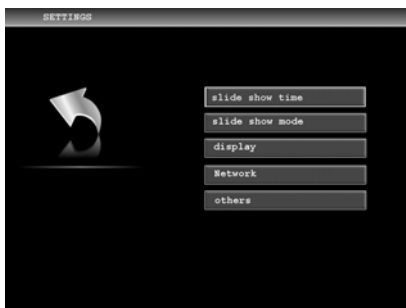
After selecting the desired files, touch the Delete icon to delete the file. There is a tip on the screen to show the deleting progress.

After deleting, the interface return to the file list mode. The deleted files won't be found in the list.

Advanced Operations

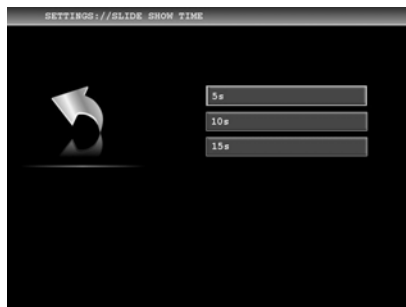
Settings

In the main menu mode, touch the SETTINGS icon, and then enter the setting mode.



1. Set slide show time

In the SETTINGS menu, touch “slide show time” to access the following choices:



Touch to set the interval time of slide show to 5s/10s/15s.

Advanced Operations

Settings

2. Change Slide Show Mode

In the SETTINGS menu, touch “slide show mode”, the screen will display as below:

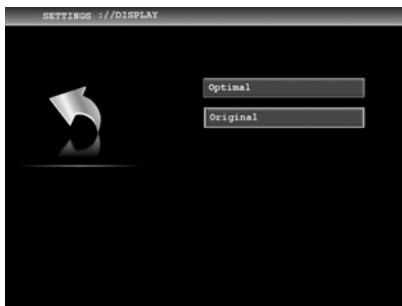


Touch the corresponding item to set the photo transition effect. Many transition effects for choice: Random、Normal、Top_Bottom、Bottom_Top、Left_Right、Right_Left、Vertical_Close、Vertical_Open、Horizontal_Close、Horizontal_Open、Close、Open、TopL_BottomR、TopR_BottomL、BottomR_TopL、BottomL_TopR

Touch the UP/DOWN icon to select items. After setting, the screen will return to the previous menu automatically.

3. Display

In the SETTINGS menu, touch “display” icon , the screen will display as below:



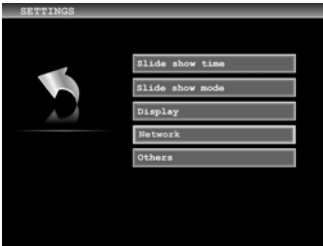
Touch Optimal to display entire images in slide show mode; touch Original to display images fit to screen in slide show mode.

Advanced Operations

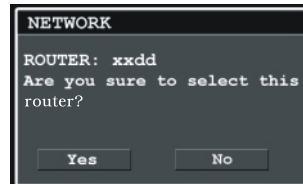
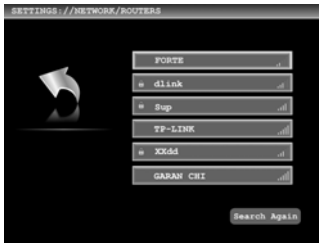
Settings

4. Network

In the SETTINGS menu, touch “network” icon to search the routers.



After searching routers successfully, there will be a router list as follow:



You can choose a router according to the received signal strength which be displayed on the right of the router's name. If password (WEP key or WPA/WPA2 key) is necessary (There will be an image of a key on the left of the router's name), input them in the following interface.



ICONS	MEANING
1	Enter button
2	Backspace key
3	Caps lock key
4	Space bar

Note:

1. If no password needed, the DPF will be connected to your home router automatically.
2. For WPA password, it needs about 15 seconds to setup connection.

Advanced Operations

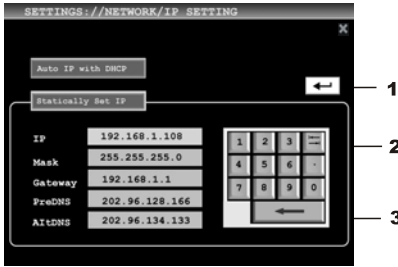
Settings

Note: It will auto enter the IP setting mode after selecting a router. Tap \leftarrow , the unit will get IP automatically.

Statically Set IP

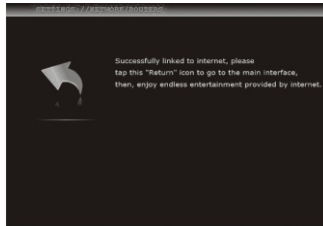
In the IP setting mode, touch Statically Set IP to enter into the statical IP mode.

In the statical IP mode, use the number soft-keyboard, set the IP, Mask, Gateway, PerDNS and AltDNS in turn on the left side.



ICONS	MEANING
1	Continue connecting
2	Tab key
3	Backspace key

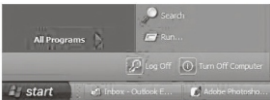
After the IP is set well and the DPF is connected to the internet, DPF will appear as below:



Now, you can enjoy the endless internet source.

Tip: How to get your IP

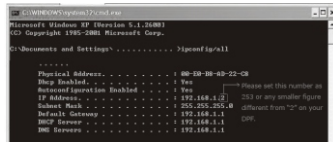
1. Open your PC, click "Start", then, click "Run"



2. Input "cmd", then, click "OK"



3. Input "ipconfig/all", you will get your IP information similar as below:



For more information about IP, please visit our website.

Advanced Operations

Settings

5. Others

In the SETTINGS menu, touch others to access, the screen will display as below :



Default

In the others setting menu, touch Default to resume the original settings. After setting, the screen will return to the setting menu automatically.

Product Info

In the others setting menu, touch "info" icon to show the software information of the product and the MAC address. Touch the EXIT icon to return to the setting menu.



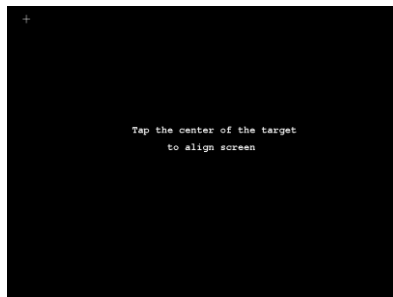
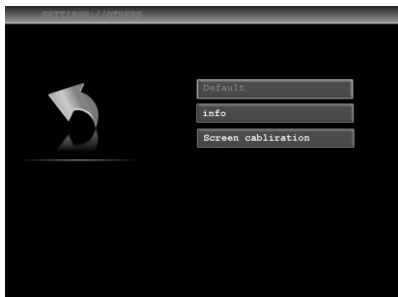
Note: When the touch panel is invalid, please calibrate the screen.

Advanced Operations

Settings

Screen calibration

Continuously press the RIGHT button on the panel board for five times to assess the below menu:



Press ENTER button on the panel board to calibrate the screen.

A "+" will appear on the left up corner, touch the center of the "+"; then, the "+" will move to the right up corner of the screen, touch it again, the "+" will move to right down corner, left down corner and center of the screen in the order, touch it in order. Now, you finish the calibration.

Note: When you touch the "+", please try to touch it as quickly as possible, it may be taken as two times touch, the "+" will not appear in order. If it happens, please start the calibration again.

Please make sure that you have touched the very center of the crosspoint of the "+" quickly, or the calibration will fail.

EXIT

After calibrating screen, the frame will return to the previous menu.

Note: Don't try to calibrate the screen unless it is necessary.

Advanced Operations

IP Radio




Attention: All the functions mentioned below are based on the premise that you have successfully linked to the internet.

Step 1. In the main menu, touch “IP Radio” to enter into the country list interface. During this process, there might be a clue show that “Connecting network...” Please wait for a while in this situation.



Step 2. Touch country name to enter into city name lists


Step 3. Touch city name to enter into radio lists.

Step 4. Touch radio to enter into the following interface:



Touch  to turn mute or reinstate to normal play , Touch  or  to decrease or increase the volume

Add stations to “My favorite”

1. In the radio list interface, touch  and it will turn from green to orange, touch the radio you prefer to add to “My favorite”, then touch  to add the radio to “My favorite”

2. In the radio list of My favorite, touch  input the radio's name and address, then touch  to confirm. Now the radio has been added to “My favorite”.

Delete stations

In the radio list interface, touch  and then touch the radio you want to delete, touch  to delete.

Advanced Operations

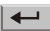
Picasa

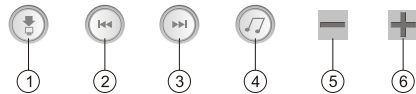
Attention: All the functions mentioned below are based on the premise that you have successfully linked to the internet.

In the main menu, touch "Picasa" you will enter into the interface as follow:




ICONS	MEANING
1	Exit and return to the previous menu
2	Enter button
3	Backspace key
4	Caps lock key
5	Space bar

Input the user name and password and then touch  to enter into the photo (or with photo folder) list interface, touch the photo to preview picture, there are several icons in a row at the bottom of the interface. Their functions are as follow:



1. download photos from picasa
2. previous photo in picasa
3. next photo in picasa
4. show pictures with background music
5. decrease volumn
6. Increase volumn of the music.

After downloading, a tip will appear at the bottom saying: success. Touch  to exit.


Advanced Operations

Weather

Attention: All the functions mentioned below are based on the premise that you have successfully linked to the internet.

In the main menu, touch “Weather” to enter into the following interface:

There are two ways to get the weather information:

1. Input city name or local zip code and then touch 
2. Touch “Browse for U.S. and International Forecasts” to enter the country list interface.



Touch the numbers and country name to enter into related city name list.
Touch the city's name to get the weather information.

Touch  to exit.

Note: There listed almost all the country and main city names. When you touch some of the country names or city names, there might be no record, and the interface may show the reason of failure such as: Failed to download the cities of this country!

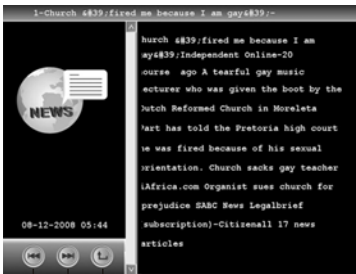
Advanced Operations

News

In the main menu, touch NEWS icon to enter into the interface with "google" and "yahoo" choices. Double touch "google" or "yahoo", or touch one of them and then touch the red "NEWS" sign to enter into the news list, touch the news you prefer to read and then touch the red "NEWS" sign to enter into the reading interface.



Note: To setup network, the "Network setting" in the Advanced Operation Part in this manual for your reference.



ICONS


MEANING

- | | |
|---|----------------------------|
| 1 | Skip to the previous news. |
| 2 | Skip to the next news. |
| 3 | Exit |



Advanced Operations

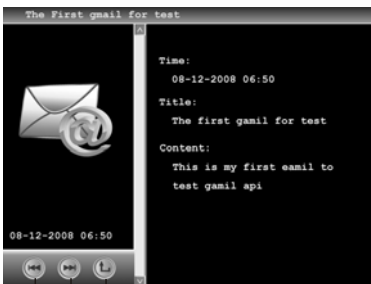
GMAIL

Attention: All the functions mentioned below are based on the premise that you have successfully linked to the internet.

In the main menu, touch “Gmail” to enter the log in interface of Gmail. Input the user name and password then touch  to enter into your e-mail receiving box.



Touch   to read the previous or next email.



1 2 3

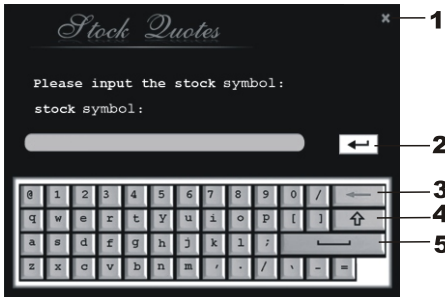
ICONS	MEANING
1	Skip to the previous e-mail.
2	Skip to the next e-mail.
3	Exit

Advanced Operations



Stock

Attention: All the functions mentioned below are based on the premise that you have successfully linked to the internet.

In the main menu, touch “Stock” to enter the following interface:



ICONS	MEANING
1	Exit and return to the previous menu
2	Enter button
3	Backspace key
4	Caps lock key
5	Space bar

Input the stock symbol and touch , the detailed stock information will appear with tendency chart. Touch  to exit.



Advanced Operations



YOUTUBE

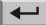
Attention: All the functions mentioned below are based on the premise that you have successfully linked to the internet.

In the main menu, touch "YouTube" to enter into the interface with two choice above: Video and Most Viewed Videos

Touch "Most viewed videos" to enter into the interface with four choices: Today, This week, This Month, All time

Touch the item you prefer to watch, You may enter into the interface with 3 icons below: Browse previous video, play, browse next video.

Then touch  to start play. At this time, you may need time to connect the network, please wait for a while patiently. Touch  to exit.

In the main menu, touch "YouTube". Touch "My YouTube" if you prefer to watch your own video. Then input the "User name" and .



ICONS	MEANING
1	Exit and return to the previous menu
2	Enter button
3	Backspace key
4	Caps lock key
5	Space bar

Attention: You must own a registered user name before watching your own video.


Advanced Operations

YOUTUBE

You will enter into the interface with video file and three icons below :



Touch   to browse the previous or next video.

Touch  to play the the video and enter into the interface of playing.

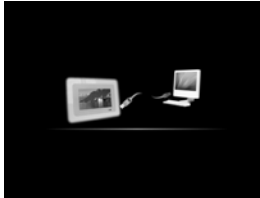
At this time, you may need to wait for a while patiently to connect network.

Touch  to exit.

Advanced Operations

Connect PC

Use the supplied USB cable to connect your DPF to your PC. The screen will display as below:



Note: Don't use any other functions when connect the DPF to the PC except file management by means of the PC.

Start ASSP

Note: The ASSP is a software developed by Sungale to manage the files in the Internal Memory to optimize the utilization of the source of the memory.

On your computer, click "My computer", then, click "StorageDevice Disk", then, double click Fileconverter.exe, you will enter into ASSP interface.

- Tip :1. If your PC has set as auto-run, you will enter into the ASSP interface directly, no operation needed.
2. The PC installed the anti-virus software or other hold-up software will make the "autorun.inf" invalid. In this situation, the file is set as hidden file. If you want to autorun the ASSP, you can set your PC to display hidden files.

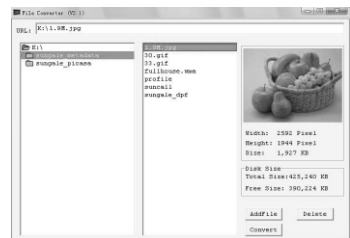
Use ASSP

1. Click "AddFile", your computer's files and folders will appear, double click the file or photo to add them to your DPF.
2. Hold on "Shift" or "Ctrl", you can download multi files or photos to your DPF.

In this way, the photos downloaded will be stored at 800X600 to suit your DPF's screen and the MP3 files will be transferred into WMA file.

When you finish the operation, safely remove the USB cable from your PC.

The unit will return to the main menu automatically.



Tip: You also can take the DPF as a regular storage device, select the photos from your computer, then paste them in the DPF's internal memory. In this way, the photos will be stored without compression. If you want to optimize your internal memory, you can select the photos, then click the "Convert".

Attention: Once you format the internal memory of your DPF, the ASSP software will be deleted.

In this situation, you can still use the DPF as a regular storage device, and copy, paste, delete files after connecting your DPF to the PC,

Customer Management

Question&Answer

Question	Answer
What photo formats are supported by the Photo Frame?	Photo: JPG, BMP, PNG, TIFF
Why player does not display picture quickly after inserting memory card?	If your picture is high quality, please wait a minute. Or switch your picture by using the ASSP tool.
Can I insert multiple memory cards?	Yes, you can insert one of SD, MMC, MS, XD and CF at the same time.
Why picture does not cover the entire screen?	The picture whose rate is 4:3 and resolution is 800(RGB)x600 or higher than 800(RGB)x600 can cover the entire screen.
What is the best Picture resolution displayed on the screen?	The frame's best resolution is 800(RGB)x600.
Why won't it advance to next picture?	<ol style="list-style-type: none">1. There is only one picture in the frame.2. You are viewing high-resolution pictures in the card, High-resolution pictures can take some time to display. Please switch your picture by ASSP tool, if you want to display the picture quickly.3. The frame is in step show mode, please touch the SLIDESHOW item on the screen to enter into slideshow mode.4. The next picture has been corrupted.
Why Digital Photo Frame does not read E-Book?	The frame only can read the ansi format TXT file.
Why the touch panel does not work?	Please see the screen calibration of the SETTINGS.

Troubleshooting

Some simple checks or a minor adjustment eliminate common problems:

No power

1. Check the power button is on.
2. Check the power outlet is operational.
3. Check the power cord for damages
4. Check the power plug is firmly connected to photo frame.

Can not read the card

1. Check the card for damages.
2. Check the card is connected the photo frame correctly
3. Pull out the card, and then insert again.

Photo Frame is not working

Turn off the power, and then turn it on again.

Customer Management

Specifications

Display: 8" TFT LCD 800(RGB) X 600 (4:3)

Internal memory: 512MB

Power: AC Adapter; Input 100-240V; Output 5V, 2A

Environmental operating ranges

Operation: 32~95 F, Humidity 0~85%

Storage: -4~140 F, Humidity 10~90%

Accessories:

Power Adapter

User's Manual

Quick Start Guide

USB Cable

Cleaning Pad

Note: All data are provided for reference purposes only. Sungale reserves the right to make any changes without prior notice.

Customer support home page

The latest support information is available at the following home page address:

[Http://www.sungalewifi.com](http://www.sungalewifi.com)

Take a moment now to visit the web site

You may receive product updates and other valuable information from the service supplier that can improve your experience with our product.

Note: This device is to be recommended to use with your home wireless router or independent office wireless router. For complex office wireless surrounding, please ask your web manager to give assistance to link to the internet.

FCC and Safety Information

• FCC Part 15.19

This device complies with Part 15 of the FCC Rules .Operation is subject to the following two conditions: (1) this device may not cause harmful interference , and (2) this device must accept any interference received ,including interference that may cause undesired operation .

• FCC part 15.21

Warning: Changes or modifications to this unit not expressly approved by the party responsible for compliance could void the user's authority to operate the equipment.

• FCC part 15.105

Note : This equipment has been tested and found to comply with the limits for a Class B digital device ,pursuant to Part 15 of the FCC Rules, These limits are designed to provide reasonable protection against harmful interference in a residential installation .This equipment generates, uses, and can radiate radio frequency energy and ,if not installed and used in accordance with the instructions, may cause harmful interference will not occur in a particular installation .If this equipment does cause harmful interference to radio or television reception ,which can be determined by turning the equipment off and on ,the user is encouraged to correct the interference by one or more of the following measures:

- Reorient or relocate the receiving antenna.
- Increase the separation between the equipment and receiver.
- Connect the equipment into an outlet on circuit different form that to which the receiver is connected.
- Consult the dealer or an experienced radio TV technician for help.

LIMITED WARRANTY

The limited warranty set forth below is given by the manufacturer with respect to Sungale brand DPF players and other consumer electronics products purchased and used in the United States of America. The manufacturer warrants this product against defects in material or workmanship as follows:

LABOR: For a period of ninety (90) days from the date of purchase if this Product is defective, the manufacturer will repair or replace the Product, at its option, at no charge. After this ninety (90) days period up to one year, a labor charge of US\$30.00 will be charged for each service.

PARTS: For a period of one year from the date of purchase, the manufacturer will supply, at no charge, new or rebuilt replacement parts in exchange for defective parts. After this one year period, the manufacturer will charge the new or replacement parts.

This warranty does not cover: (1) customer instruction, installation or set up; (2) cosmetic damage or damage due to accident, misuse, abuse, or negligence; (3) commercial use of the Product; (4) modification of any part of the Product; (5) damage due to improper operation, improper maintenance, or connection to an improper voltage supply; (6) damage due to an attempted repair of the Product by anyone other than a facility authorized by the manufacturer to service the Product; (7) consumables (such as fuses and batteries). This warranty is valid only in the United States.

The product must be accompanied by a copy of the original retail purchase receipt. If no proof of purchase is attached, the warranty will not be honored and repair cost will be charged.

This warranty is valid with attach written documentation detailing the complaint to the outside or inside of the carton.

This warranty is invalid if the factory applied serial number has been altered or removed from the Product.

The manufacturer reserves the right to modify any design of this product without prior notice.

To obtain warranty service, you must deliver the product freight prepaid, in either its original packaging or packaging affording an equal degree of protection, plus proof of purchase, to:

Service Center
13941 Central Ave,
Chino, CA 91710
Tel: **800-473-5156**

REPAIR OR REPLACEMENT AS PROVIDED UNDER THIS WARRANTY IS THE EXCLUSIVE REMEDY OF THE CONSUMER. THE SERVICE CENTER SHALL NOT BE LIABLE FOR ANY INCIDENTAL OR CONSEQUENTIAL DAMAGES FOR BREACH OF ANY EXPRESS OR IMPLIED WARRANTY ON THIS PRODUCT. EXCEPT TO THE EXTENT PROHIBITED BY APPLICABLE LAW, ANY IMPLIED WARRANTY OF MERCHANTABILITY OR FITNESS FOR A PARTICULAR PURPOSE ON THIS PRODUCT IS LIMITED IN DURATION TO THE DURATION OF THIS WARRANTY.

Some states do not allow the exclusion or limitation of incidental or consequential damages, or allow limitations on how long an implied warranty lasts, so the above limitations or exclusions may not apply to you. This warranty gives you specific legal rights, and you may have other rights which vary from state to state.

Digital Photo Frame

Sungale