

((kula) TV

MODEL: ITV430

4.3 inch KULA TV Quick Start Guide

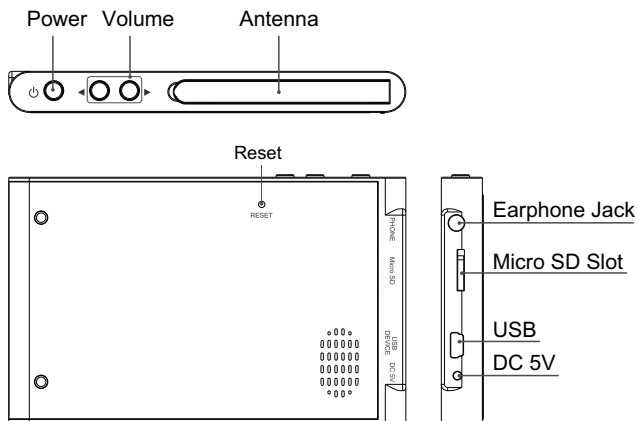


Welcome to Kula TV -- the first Portable WiFi TV that provides you 500+ channels all over the world with touch screen technology, as well as video, audio and photo playback capabilities. This Quick Start Guide aims to provide an overview of Kula TV's key features. Below are a few easy steps to help you get started.

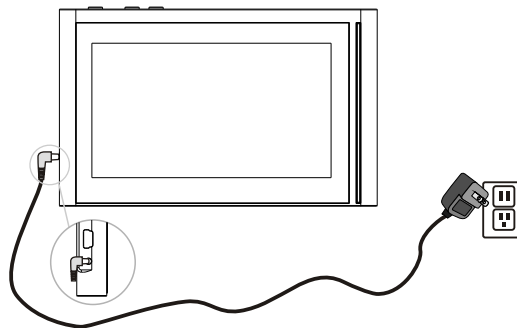
Sungale

QUICK START GUIDE

Navigation Controls



Getting Started



1

QUICK START GUIDE

1. Charge the unit

To fully charge your Kula TV needs about 4 hours with using the Wall Adaptor included in the package. If you use USB cable to charge, it needs about 6 hours.

2. Power on the unit



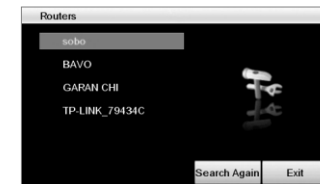
Above home screen will appear

3. Check your home router

Make sure your home wireless router is working well

4. Link to Internet

Tap on Kula TV icon on the home screen, your Kula TV will begin to search and list the routers in your area as below chart.



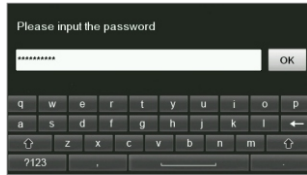
In case you did not find your router in the list, please tap on Search Again until your router listed.

Tip: The closer to the router, the easier your router will be listed by your Kula TV.

2

5. Select your router & input your password

- 5.1 Tap on your router's name. If your router is without a password, Kula TV will be linked to the internet correspondingly;
- 5.2 If your router is protected by a password, the below chart will appear



tap on the keyboard to input your password, then tap on OK, then, your Kula TV will be linked th the internet.

- 5.3 If you do not know your password for your router, please contact your service provider for assistance;
- 5.4 After the device is linked to internet, a prompt "Successfully linked to internet..." will appear on the screen, then go to the Select Channels.
 - The Kula TV also can be linked to internet by tap on "Setting" on the home screen.

6. Select Channels

The 500+ channels of Kula TV are classified in different categories in



order to ease your selection. You can search channels by languages, countries and subjects. Watch and tap on the screen, all the channels are on your fingers.

Tip: IP TV is a new broadcasting media, some channels are not operated in standardization, you may find some channels on & off from time to time, if a channel is failed to be cached, please try it later.

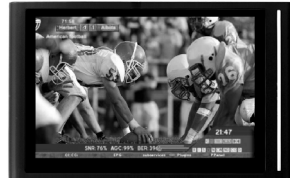
Welcome to recommend channels

Our service team is working daily to try to find and add new channels to satisfy your demand, if you find any online channels we did not listed, please send your messages to our Kula TV service team at support@sungalewifi.com, thank you very much.

For business and technical reasons, we may not be able to list the channels you recommended immediately, we will do our best.

Work as a Hi-Resolution Multi-media player

Except the IP TV function, your Kula TV also can be used as a high resolution multi-media player with most convenient touch screen operation.



For Video / Audio / Photo playback, you can plug in your mini SD card with the content you want to play, or tap Storage on the home screen to play the content in Internal Memory. Everything is in your eyes and on your fingers, you will find the operation is so easy.

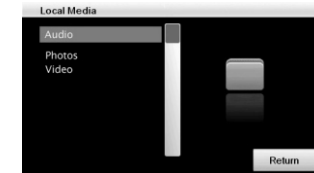
Work as a Clock



Management of Files of Internal Memory

You can use your computer to manage the internal memory easily.

1. Link Kula TV to your computer with using the USB cable included in the package;
2. Kula TV will be recognized by your computer automatically;
3. Click **start** on your computer's screen, then, click **My Computer**, you will find a Removable Disc, this is your Kula TV. Then, click the Removable Disc to manage your Kula TV files. You can setup different folders as below,



Then, pour your photo, audio and video files into Kula TV.

This is a Quick Start Guide, For any dubitation, make sure to go to the user manual to find the details.

Support

If you encounter an issue, resolve the issue in the following order.

1. Refer to the User's Manual.

- You can download the user manual from www.sungale.com.
- Click Support and then Manual Download.

2. Visit the support site.

- For general FAQs: www.sungale.com
- More supports about WIFI: www.sungalewifi.com

3. Contact Sungale Support.

- Toll Free Call in the USA: **800-473-5156**
- Service email: info@sungale.com

Thanks for purchasing Kula TV, wish this little Kula TV bring you happiness.