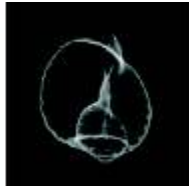




# Digital Photo Frame Player User Manual



## Introduction

Congratulations on your purchase of the Digital Multimedia Digital Photo Frame.

Before operating the unit, please read this manual thoroughly, and keep it for future reference. This manual will help you use many of the exciting features to make your Multimedia Digital Photo Frame view more enjoyable.

The Multimedia Digital Photo Frame enables you to viewing digital pictures directly from your camera's memory card. You can also create a slideshow with multiple transition effects. No computer, digital camera or internet connection is required.

The Multimedia Digital Photo Frame is compatible with the following memory card formats: SD, MultiMedia Card, Memory Stick, and Memory Stick PRO and USB.

## Main Features

- ★ Displays digital pictures (JPEG), plays MP3s and supports video files without a computer (memory card not included).
- ★ Compatible with Secure Digital Card (SD), MultiMedia Card (MMC), Memory Stick and Memory Stick Pro.
- ★ Compatible with USB 2.0 interface.
- ★ Plays MP3 files with high quality integrated speakers.
- ★ Instantly plays MPEG-1, MPEGII and MPEG-4 on supported memory cards.
- ★ Slim and portable remote control.
- ★ Automatic slide show with multiple transition effects and display times.
- ★ Plays slide show with MP3 music in the background.
- ★ User-friendly on-screen display allows you to access all functions easily.

\*Video files may not play properly if stored on a low speed card.

## Precautions and Maintenance

- ★ For indoor use only
- ★ To avoid risk of fire or electric shock, do not expose this appliance to moisture.
- ★ To avoid overheating, do not block the ventilation holes on the back of the digital photo frame at any time.
- ★ Keep your Multimedia Digital Photo Frame out of sunlight. Direct sunlight may cause damage.
- ★ Always use the eject buttons on the memory storage card slots to remove the memory storage cards.
- ★ Do not dismantle the Multimedia Digital Photo Frame. There is a risk of electric shock, and there are no user serviceable parts inside. Dismantling your Multimedia Digital Photo Frame will void your warranty.
- ★ Do not use the Multimedia Digital Photo Frame if conditions could allow condensation to occur, or damage may result.

## Cleaning the LCD Screen

- ★ Treat the screen gently. The screen on the multimedia Digital Photo Frame is made of glass and can be scratched or broken.
- ★ If fingerprints or dust accumulate on the LCD screen, we recommend using a soft, non-abrasive cloth such as a camera lens cloth to clean the LCD screen.
- ★ If you use the LCD Cleaning Kit sold at various retail outlets, do not apply the cleaning liquid directly to the LCD screen. Moisten the cleaning cloth with the cleaning solution and apply the cloth to the screen.

## Screen Saver

- ★ If you do not insert a card or USB, or the unit is in stop or pause mode a screen saver will appear in 10 minutes. Press any button to return to the unit's main functions.
- ★ To prolong the life of the unit, please set the screen saver to ON.

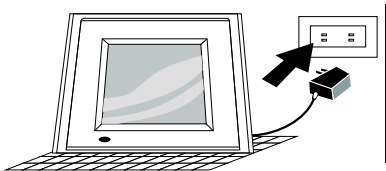


### **WARNING:**

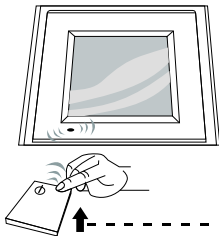
**Please STOP the unit before inserting or removing a card or USB. Failure to do so may cause damage to the card/USB and the unit.**

## Getting Started

1. Assemble the Multimedia Digital Photo Frame bracket to prop the unit up. Plug the power adaptor into an electrical outlet.



2. Adjust the power switch at the left side of DPF to "ON".



## Inserting Memory Cards

Your Multimedia DPF is compatible with the following memory cards:

- ★ Secure Digital Card (SD)
- ★ Multimedia Card (MMC)
- ★ Memory Stick and Memory Stick Pro

Insert the memory card with the screen and slots all facing yourself.

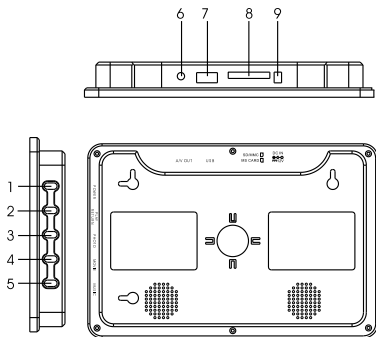
Do not force the memory card in the slot. If you are not able to easily insert the memory card completely, you might have inserted the card the wrong way.



Note: The multimedia DPF will only recognize digital pictures stored in JPEG format. Digital pictures stored in other formats will be ignored by the device.

## Key Control and Remote Control

### Key functions:



1. **POWER:** Switch the player between "on" and "off" modes.
2. **PLAY/RETURN:** Press this button to start playing the current file in order. Pressing this button a second time will return you to the Root Menu during playback.
3. **PHOTO:** Press PHOTO button to switch to photo mode while in the main menu.
4. **MOVIE:** Press MOVIE to switch to video mode.
5. **MUSIC:** Press MUSIC to switch to music mode.
6. **A/V OUT:** Connect to a TV set to output video and audio.
7. **USB:** Connect the USB cable from the DPF player to the USB disc/MP3 player.
8. **MS/SD/MMC Card:** Insert MS/SD/MMC card
9. **DC12V :** Input the DC power adaptor to the DPF player

## REMOTE CONTROL



(Note: Check before using the Remote Control to remove the plastic insulator strip away from the battery.)

### **POWER**

Press **POWER** to turn the player on and off.

### **MUTE**

Press **MUTE** to toggle sound on and off.

### **PHOTO**

Press **PHOTO** to switch to enter Slide Show Mode while in the Main Menu.

### **MUSIC**

Press **MUSIC** to switch to Music Playback Mode.

### **MOVIE**

Press **MOVIE** button to switch to movie playback.

### **REPEAT**

Press **REPEAT** to select among available repeat options (chapter repeat, title repeat, folder repeat etc.)

### **ROTATE**

Press **ROTATE** to rotate the picture in clockwise.

### **SETUP**

Press **SETUP** to display the player's **SETUP** menu.

## **16:9/4:3**

Press **16:9/4:3** to adjust the TFT LCD aspect ratio between 4:3 and 16:9

## **MENU**

Press **MENU** to enter the main menu.

## **ZOOM**

Press **ZOOM** to enlarge the picture in increments of 1.2, 1.3, 1.5, 2, 2.5, 3, 3.5, 4, 1/2, 1/3, 1/4, OFF.

## **VIEW**

Press **VIEW** to enter into a 6-picture-view display that displays 6 smaller pictures to navigate.

## **OSD**

Press **OSD** to display information of the video, ie. name, code etc. Press again to cancel display.

## **BACK MUSIC**

Press **BACK MUSIC** to play music in the background when playing photo.

## **NAVIGATION BUTTONS**

Press the arrow keys to move the cursor to the desired icon. This will also pan over a picture in Zoom Mode.

## **VOLUME +/-**

Press the volume keys to adjust the player's volume.

## **SLIDE SHOW**

Press **SLIDE SHOW** to slide show the photos when in photo list mode or playing single photo.

## **STEP SHOW**

Press **STEP SHOW** to play single photo, each press to skip to the next photo.

## PLAY/PAUSE

Press **PLAY** to begin Playback Mode of your selected track.

Press **PAUSE** to freeze playback.

## STOP

Press **STOP** once to halt playback (pre-stop). Press **STOP** again to terminate playback function and return to the Main Menu.

## EXIT

Press **EXIT** to exit the current playback.

## PREV

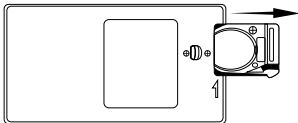
Press **PREV** to return to the previous title/chapter/track/picture.

## NEXT

Press **NEXT** to skip ahead to the next title/chapter/track/picture.

## Installing and replacing the Remote Control Battery

1. Place the Remote Control with the buttons facing downward.
2. While pressing down on the rigid area of the battery cover, pull the tray out.
3. Place a "CR2025" lithium battery on the tray with the positive "+" end facing towards you.
4. Close the tray.



## Main Menu

The screen below will appear if the memory card has been correctly inserted. Make sure you have stored a song, photo, or video on your memory card.



PHOTO	Enter the photo play mode directly
MUSIC	Enter the music play mode directly
VIDEO	Enter the video play mode directly
SETUP	Enter the setup mode directly

## Viewing your Pictures

1. Use either the remote control or the on-board buttons to control the Multimedia **DPF**.
2. Use the remote control to highlight and select the "Photo" folder (use arrow keys to navigate and press **ENTER**, or simply press **PHOTO** to select).
3. Highlight a picture and press **ENTER** to view the selected picture.
4. Press **PLAY** on the remote control to enter Slideshow Mode.
5. Press **VIEW** while on the photo menu to enter a **6-picture view** display and then use the arrow keys to choose the picture you would like to see a full screen view of.
6. Press **SETUP** to enter Setup Mode.
7. Move the cursor to "Video Setup" by pressing the **Right** arrow key.
8. Use the **Down** Arrow key and select "Time". Use the **Right** arrow to select the amount of time you would like each picture to be viewed in Slideshow Mode and press **ENTER**. Press **SETUP** again to exit the Setup Menu.

(Note: Press **BACK** MUSIC button to view pictures with Mp3 in background.)

When in **BACK** MUSIC mode, press **UP** arrow key to skip to the previous song; press **DOWN** arrow key to skip to the next song; press **PREV** key to skip to the previous photo; press **NEXT** key to skip to the next photo.

## Listening to your MUSIC files

Make sure there are MP3 music files on your memory card (See the Q&A section for more information).



1. Use the Remote Control's **Right** and **Left** arrow keys to highlight and select the "Music" folder and press **ENTER**, or press **MUSIC** on the remote control directly.
2. Highlight and select the music file you want to play by pressing the direction keys and press **ENTER**.
3. Adjust the Volume using the **VOL+** and **VOL-** keys.
4. Fast forward or fast reverse through the track by pressing the **FWD** and **REV** keys on the Remote Control.
5. Press the **Up** or **Down** arrow key or **PREV/NEXT** keys to select the previous or next music file respectively.

## Watching your Video files

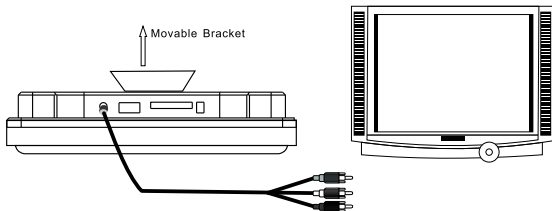
The Multimedia DPF supports the following video formats: video formats used by most digital cameras (**MPEG-I** and **MPEG-II**). Make sure these files are stored in your memory card (See the Q&A section for more information).



1. Highlight and select the "Video" folder using your **Right** and **Left** arrow keys and press **ENTER**, or press **MOVIE** on your Remote Control directly.
2. Highlight and select the video you want to watch by pressing the arrow keys. Press **ENTER** to make your selection.
3. Adjust the Volume using the **VOL+** and **VOL-** keys.
4. Fast forward or fast reverse through the video by pressing the **FWD** and **REV** keys on the Remote Control.
5. Press the **Up** or **Down** arrow key or **PREV/NEXT** keys to select the previous or next video file respectively.

## Connecting your Multimedia DPF to your TV

Use the supplied TV Cable to connect the Multimedia DPF to your TV's AV jacks (usually yellow, red and white ). Turn off both the player and the TV before making the connection. Once the connection is made, make sure that your TV is in the right setting .



### SETUP:

#### Main menu:

- \* SYSTEM SETUP
- \* LANGUAGE SETUP
- \* VIDEO SETUP
- \* SPEAKER SETUP
- \* EXIT SETUP

Parameter setting.  
OSD language setting.  
Video displaying setting.  
Speaker setting.  
Exit the setting menu.

## SYSTEM SETUP

### Operation:

Press **Up** and **Down** directional keys to select the function item,  
Press **Right** and **Left** directional keys to select the desired settings.  
Press **Enter** to confirm.

### Function:

SCREEN SAVER: switch ON/OFF

TV TYPE: switch TV type:4:3 PS/4:3 LB/16:9.

Default: default.

## LANGUAGE SETUP

### Operation:

Press **Up** and **Down** directional keys to select the function item,  
Press **Right** and **Left** directional keys to select the desired settings.  
Press **Enter** to confirm.

### Function:

OSD LANGUAGE: Switch between ENGLISH/CHINESE/GERMAN/SPANISH/FRENCH/ITALIAN.

MENU LANGUAGE: Switch between ENGLISH/CHINESE/JAPAN/FRENCH/SPANISH  
/PORTUGUESE/GERMAN/LATIN



## VIDEO SETUP

Operation:

Press **Up** and **Down** arrow keys to select the function item. Press **Right** and **Left** arrow keys to adjust the functions. Press ENTER to confirm your desired settings.

### Function:

BRIGHTNESS : adjusts the brightness.

CONTRAST : adjusts the colour contrast.

HUE : adjusts the hue setup.

SATURATION : adjusts the colour saturation.

TIME: adjusts the interval time 5 SEC/10 SEC/15 SEC.

## SPEAKER SETUP

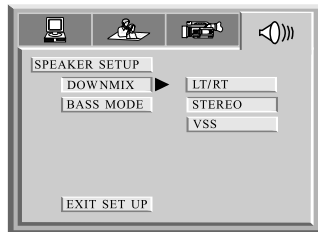
### Operation:

Press Up and Down arrow keys to select the function item.  
Press Right and Left arrow keys to select the desired settings.  
Press ENTER to confirm your desired settings.

### Function:

DOWNMIX: adjust LT/RT /STEREO /VSS.

BASS MODE: adjust ALL LG SPK /ALL SM SPK/  
MIXED SPK.



## Q&A

This chapter will attempt to troubleshoot common problems that one may experience with the Multimedia DPF. If this guide does not solve your problem, do not dismantle the machine yourself.

Question	Answer
What photo, music, and video formats are supported by the Multimedia Digital Photo Frame?	Photo: JPEG Music: MP3 ,WMA Video: MPEG-I, MPEG-II ,MPEG-4.
What memory cards are compatible with the digital frame?	Secure Digital Card (SD)/MultiMedia Card (MMC) Memory Stick
How do I store music files?	Use a personal computer and a popular audio editing software such as MusicMatch to convert your music to MP3 format. Transfer the MP3 file to the memory card using a Memory Card Reader.
Does Multimedia Digital Photo Frame have built-in memory?	NO. The DPF cannot store files as there is no built in memory.
Can I insert multiple memory cards?	No. The player can only use one memory card at a time.
Does it play every type of AVI video file?	No. The device only works with the AVI files taken by most digital cameras.
What is the best picture resolution displayed on the screen?	The frame's best resolution is 480 (RGB)X 234.
Can I play MPEG-I and MPEG-II files stored on memory cards ?	You can play MPEG-I video properly using any supported memory card. You are able to play MPEG-II files properly using a high speed SD card.
Can I rotate a picture on the screen?	Yes. Use the ROTATE button on the remote control to rotate a picture. Note: The rotated picture will return to its original orientation after you power down the digital frame.
Can I adjust the colors of the picture?	No. All color settings are preset at the factory. You can only adjust the brightness and contrast of the screen.

**Specifications**

Display: 7" TFT LCD 480 (RGB)X 234

I/O:

A/V Out Jack

Speakers (stereo)

Remote Control

Power:AC Adapter; Input 100-240V; Output 12V,1.5A

Environmental Operating Ranges

Operation: 0 ~ 35°C, Humidity 0 ~ 85%

Storage: -20 ~ 60°C, Humidity 10 ~ 90%

**Accessories:**

Power Adapter

AV Cable

Remote Control

User's Manual

7-inch Digital Photo Frame