

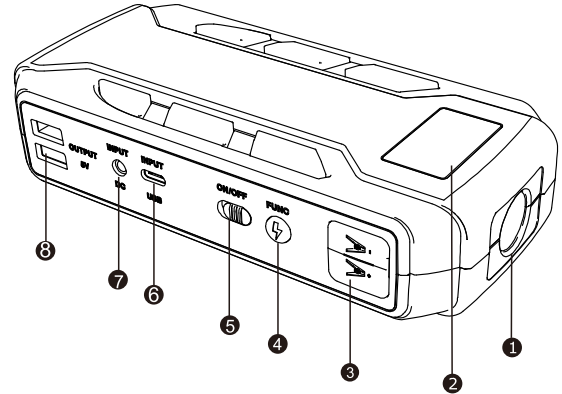
# MULTI-FUNCTION JUMP STARTER



## USER MANUAL



## A. Functional diagram



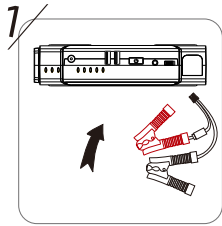
- |                     |                         |
|---------------------|-------------------------|
| 1. Emergency Lights | 2. Display Screen       |
| 3. Start Port       | 4. Function Key         |
| 5. Main switch      | 6. TYPE-C charging port |
| 7. DC charging port | 8. USB output port      |

## B. Technical parameters

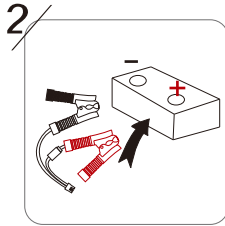
Model : A10	Applicable models: 12V
Size: 168*78*38mm	Starting current: 400A
Input: 5V-2A 9V-2A 14V-1A	Peak current: 800A
USB Port: 5V-3A (2A+1A)	Applicable temperature : -30~65°C



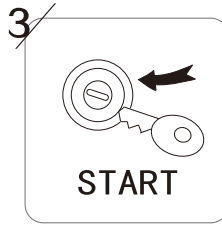
## C. Car started steps



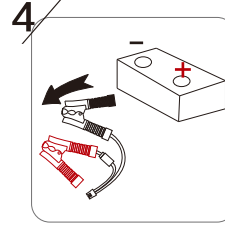
The plug connect the jump starter



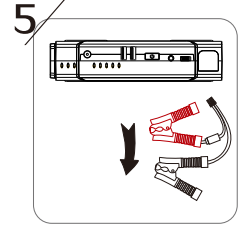
Red clamp connect "+"  
black clamp connect "-"



Start the vehicle



Remove the clamps from the battery



Remove the plug from the jump starter

### Important reminder:

1. Do not reverse the starting steps of the car;
2. The metal head of the battery clamp and the metal wires on the positive and negative poles of the battery should be fully contacted, and dust or rust should be cleaned first.
3. After confirming that the electric quantity meets the starting conditions, Start engine shall be operated only when the main power switch is turned off, and shall be turned on again when the electric quantity needs to be confirmed next time.
4. If the battery is too low or has no electricity, disconnect the negative connection line of the battery and connect the positive and negative connection lines with clips to achieve better starting effect. (Remember: the positive and negative wires must not be connected by mistake!)

## Startup of five-prevention smart clamp

1. Please make sure that the electric quantity is not less than 60%, and the startup is prohibited below 60% (**starting the car at full power as much as possible will ensure the service life of the power supply**). Insert the smart clamp into the power supply (**insert the plug firmly**). At this time, the traffic lights on the clamp will flash alternately.
2. Clamp the red clamp to the positive (+) pole of the battery and the black clamp to the negative (-) pole of the battery. The intelligent clamp can be started when the green light is on for a long time.
3. Please operate and start the car within 30 seconds, otherwise the power will be cut off automatically, and the red light on the clamp will be on for a long time with an alarm sound.
4. Remove the battery clamp and start the power supply within 20 seconds after starting. It is forbidden to insert the battery clamp into the power supply for a long time.
5. **Cannot exceed 3 seconds for Start engine**. If the start-up is unsuccessful, please remove it from the car and wait for 2-3 minutes (after temperature of clamp drops) and then restart the connection.

## Ordinary Battery Clamp Starts Car

1. Please make sure that the electric quantity is not less than 60%, and the starting is forbidden if the electric quantity is less than 60% (**starting power supply starts the car at full power state as much as possible, which will ensure the service life of the power supply**). Insert the ordinary clip into the power supply (**insert the plug as hard as possible**).
2. **Clamp the red clamp to the positive (+) pole and the black clamp to the negative (-) pole of the battery.**
3. **Please operate and start the car within 30 seconds.**
4. Remove the battery clip and start the power supply within 20 seconds after starting. It is forbidden to insert the battery clip into the power supply for a long time.
5. **Cannot exceed 3 seconds for Start engine**. If the start-up is unsuccessful, please remove it from the car and wait for 2-3 minutes (**after the temperature of the clip protection module decreases**) before reconnecting and starting.

## D.Functional operation instructions

### Main switch instructions

The main switch controls the function of the entire board (the power start Port is not controlled by the main switch, Before starting the car, please turn off the main switch and push it to the OFF side.)

Before charging, please turn on the main switch and push it to the ON side to connect the charger to charge the power supply;

**When not in use, please turn off the main switch and push it to the OFF side to reduce power loss.**

### Instructions for Using Function Key

On the premise of turning on the main switch, press the function key once to display the power quantity. After the screen is lit, press the function key for 3 seconds to turn on the illuminating lamp, and then press it for a short time to switch the illuminating mode, which is: strong light, flash, SOS, and off.

## E. Description of electric quantity display

The LCD display screen displays 0-100% digitally.

**Charging Display:** When charging is connected, the display IN blinks, and the electricity quantity number indicates the current electricity quantity. **Discharge display:** power on displays the current power OUT, USB output displays OUT 5V2.1A.

## F. Description of charge and discharge

This product has built-in boost voltage, supports 5V2A, 9V2A, 14V1A charging input, and supports 5V3A (2A+1A) output. **When charging, be sure to use a regular charger that matches its parameters.**

**Do not use inferior charger to charge, otherwise safety accidents may occur.** Please do not connect the over power products when outputting USB.

## G.Toxic and Harmful Substances

ITEM	composition and amount of toxic and harmful substances									
	Pb	Hg	Cd	Cr(VI)	PBB	PBDE	DEHP	DBP	BBP	DIBP
Main Unit	○	○	○	○	○	○	○	○	○	○

○:indicates all homogeneous materials' hazardous substance content are below the MCV limit specified in the standard (EU)2015/863.

## H. Warning

1. The emergency starting operation steps of the car cannot be reversed.
2. In case of failure, please contact the dealer for handling. It is forbidden to disassemble the main machine without authorization; otherwise safety accidents may be caused.
3. The positive and negative poles of the power supply are prohibited from butt joint, reverse connection or indirect short circuit; otherwise safety accidents will be caused.
4. When using or charging, please stop using and consult customer service if any abnormal situation is found.
5. Please keep away from high temperature or humid environment, and do not place it in direct sunlight.
6. Children are prohibited from contacting this product to avoid safety accidents.
7. When charging the product, please put it in an empty place and have an adult look after it.
8. Please be sure to read the instructions and follow them. If you have any questions, please contact customer service at any time.
9. It is strictly prohibited to disassemble, puncture, refill, short-circuit the product or put it into water, fire or expose it to an environment with a temperature higher than 65°C to avoid damage to the product or other hazards.
10. Do not clamp battery clamps or connect the positive and negative electrodes directly or indirectly with conductors to avoid safety accidents.

## I. Maintenance tips

1. This product can effectively deal with the car start-up failure caused by sporadic problems of car battery such as insufficient electricity and low temperature. **However, it can only be used as emergency equipment and cannot replace the frequent use of car batteries or professional rescue.** If the battery is aged, please replace the new battery in time after starting the car. After the car starts, please replenish the electricity in time for the next use.
2. Do not start the car at less than 60% of the power, otherwise it will easily lead to over discharge of the battery and damage to the battery core.
3. The best way to maintain the emergency starting power supply for automobiles is to use it lightly and charge it quickly. The greater the frequency and number of times it is used, the faster the battery will lose. The smaller the degree of deep discharge of the starting power supply, the longer the use time. If possible, avoid frequent full charge and discharge.
4. The startup port is the direct output port of the battery. It is not protected and must not be directly connected to products without voltage protection. Otherwise, the products and power supply may be damaged.

- When not in use for a long period of time (more than 15 days), the battery has self-consumption, which requires regular check to maintain a certain amount of electricity and charge and discharge at least once a month. Otherwise, the power supply may be damaged.

## J. Warranty statement

- Within 7 days from the next day when you sign for the product, if the product has any quality problem caused by non-human reasons, you can enjoy the service of return and replacement without reason after being confirmed by the manufacturer.
- Within 8-15 days from the next day when you sign for the product, if the product has any quality problem caused by non-human factors, you can enjoy free replacement or maintenance service upon confirmation by the manufacturer.
- Within 12 months from the day after you sign for the product (within 3 months for accessories), if there is any product quality problem caused by non-human factors, you can enjoy free maintenance service upon confirmation by the manufacturer.

## Non-warranty Regulations

- Unauthorized maintenance, misuse, collision, negligence, abuse, excessive discharge, liquid intake, accident, alteration, incorrect use of non-product accessories or accessories that do not conform to parameters, or tearing up, altering labels and production dates.
- The validity period of three guarantees has expired
- Damage caused by force majeure.
- Performance failure of this product and accessories caused by human factors.
- Do not operate or maintain according to instructions.
- Normal battery loss and performance degradation caused by power supply usage.



# Warranty Card

For warranty service, please show this warranty card and fill in the relevant contents in detail. The manufacturer provides warranty service to the purchasing customer for 12 months from the next day when the product is received, and 3 months for accessories. For products that are not covered by the warranty, our company can provide maintenance services, but the maintenance expenses and round-trip freight shall be borne by the customer.  
**Note:** This product is for commercial use and only provides one-month warranty service.

Item NO.		Serial NO.	
DATE OF Purchased		DATE OF Repair	
Name		Tel.	
Adress			
Purchasde From			
<b>Description defects</b>			