

# Sungale

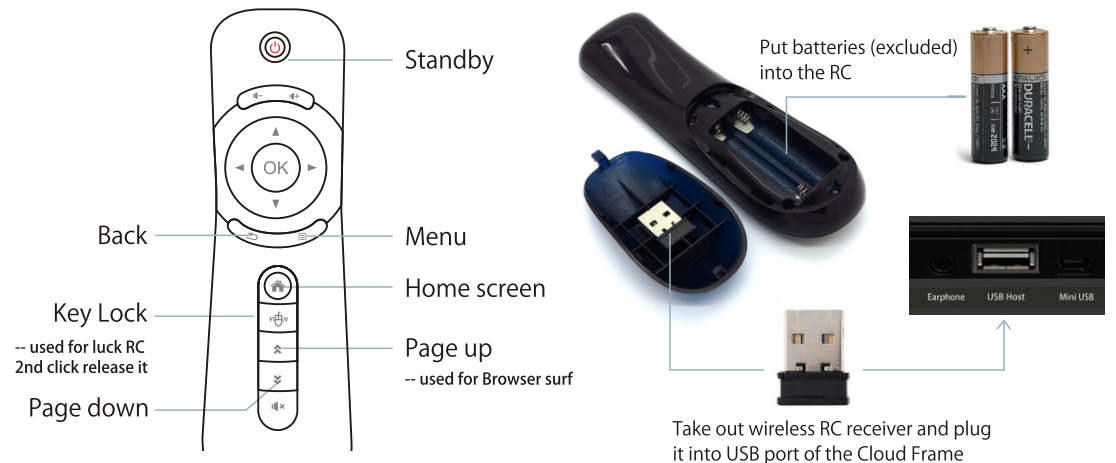
## Cloud Frame

### QUICK START GUIDE

#### 1. Packed

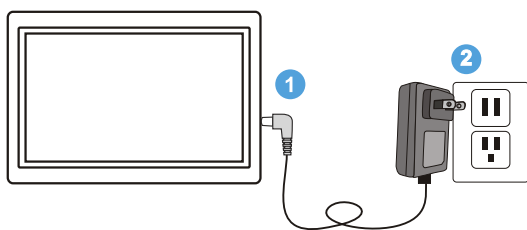
- a) Cloud Frame
- b) Quick Start Guide
- c) Power Adaptor
- d) Limited Warranty
- e) Stand (for 7 inch and 10 inch models)
- f) Motion Sensor RC (for 14 inch or above models)
- g) VESA mount (for 14 inch or above models)

#### 2. Remote Control (For 14 inch screen or above cloud frames only)



The RC is for 14" screen or above cloud frames only. The smaller screen cloud frames are using touch screen operation, they do not need RC.

#### 3. Connect Power



Connect power, the frame will begin to start automatically.

#### 4. Link Wi-Fi



After power-on, the screen will appear a prompt to ask you to link to Wi-Fi, tap or click on the "Setting" on the prompt to link your frame to the internet.

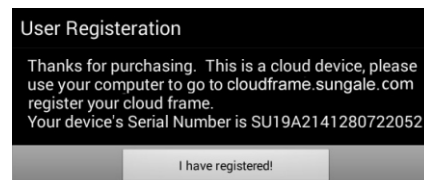
#### 5. Multi Function Brief



Cloud Frame is with very friendly interfaces, you can operate most of the function, such as Online Photos, Local Photos, Online Videos, Local Videos, Social Media, Wireless, Dropbox, Setting etc.

For different models, the block charts may be a little bit different.

#### 6. Cloud Album



1) The most unique feature of this frame is "My Cloud Album", tap or click on it, you will find a registration prompt. Now, you need to go to your computer to register your cloud frame.

2) Type in cloudframe.sungale.com on your computer, you will find below interface.



Click on "Activate Frame", then, follow screen instructions, you can finish your registration.

#### 7. Smart Phone APP

Go to Google's Play Store or Apple's App Store, search "Sungale Cloud Mobile", you will find app for our cloudframe, download and install the app in your smartphone, you can use your cell phone to view your photos and send photos to the cloud albums.



#### 8. Support

For manual download, FAQs and more supports: www.sungale.com

If you need help, please contact us: service@sungale.com