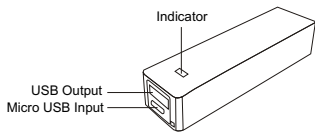


INSTRUCTIONAL USAGE



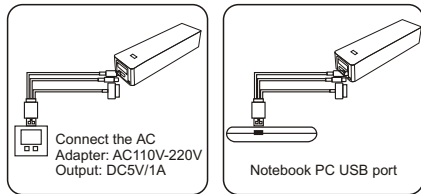
Note:

Before first use of your Power Bank battery, please charge it fully.
Do not link three devices to charge them on one 3-tip cable at the same time that will lead to exceeding output rating.

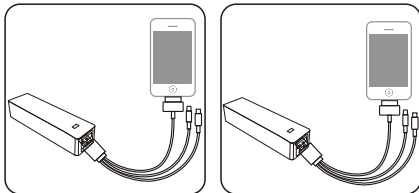
1. Charging the Power Bank

Connect one end of the USB charger to the micro-USB input port on the Power Bank and the other end into the power source (AC Wall Adapter or Computer USB port). The Power Bank will begin charging as soon as power is connected. (The output current of computer USB port is 500mA, the charging time will be longer than using wall adaptor)

See below the chart



2. Charging the device via USB output port (See below chart)



Note: The included USB cable can be used for charging only; it cannot be used for data transfer.

3. Indicator

When the power bank is charging the device, the indicator is blue, and the indicator will turn off, when the power bank battery is use up.
When charging the power bank, the indicator is red, and the indicator will turn off, when the power bank is charged full.

SPECIFICATIONS

Power capacity: 2000mAh	Power bank weight: 0.13lb
Rated input: DC5V/1A	Rated output: DC5V/1A
Input port: Micro USB	Output port: USB

SAFETY PRECAUTIONS

WARNING: Please read all instructions prior to using this product.

1. Do not place battery in fire or other excessively hot environments.
2. Do not attempt to replace any part of the battery.
3. Never dispose of batteries in the garbage.
4. Do not expose this battery to moisture or submerge it in liquid. Keep battery dry at all times.