



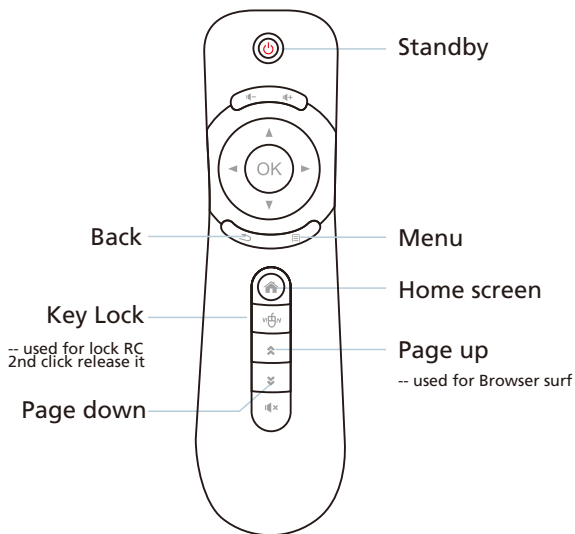
Cloud Frame

QUICK START GUIDE

CPF2200

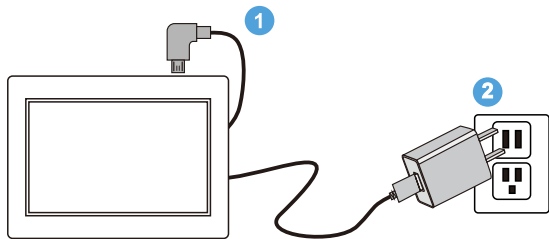
1

Remote Control



2

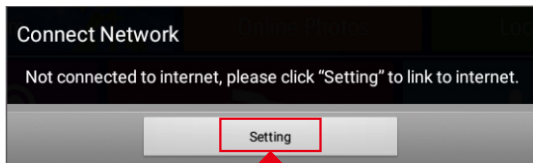
Connect Power



Plug the Power Adapter into the frame and also into a power outlet.
Once connected to power, the frame screen should automatically begin booting up.

3

Link Wi-Fi



After power on, move your remote control, and you'll see a black triangle cursor appear on your frame screen, please use the remote control to operate. Please follow screen prompt to connect to Wi-Fi.

Step 1: Click "Settings" button on the prompt.

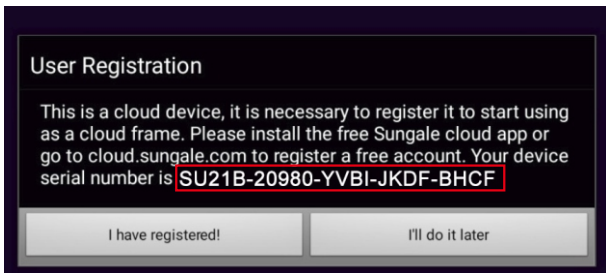
Step 2: Select the WiFi button to the "ON" position.

Step 3: Select your network, put in your password, and then click "connect".

4

Register Your Cloud Frame

After Wi-Fi is connected, click "My Cloud Album" on home screen, below message will appear to remind you to register your cloud frame.



You can register your cloud frame on the Sungale Cloud App or web portal <https://cloud.sungale.com>.

1) Register with your Mobile phone

Step 1: Go to Apple's App Store or the Google's Play Store, download and install "Sungale Cloud" onto your mobile phone.

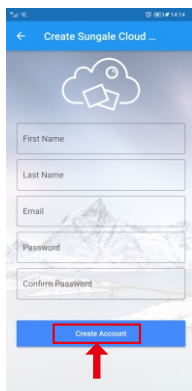
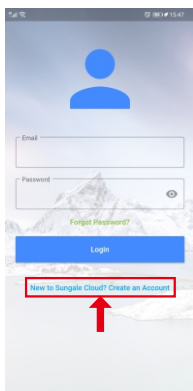


Step 2: Open the "Sungale Cloud" App from your phone, tap "New to Sungale Cloud? Create an Account".

Step 3: Enter your personal information and tap "Create Account".

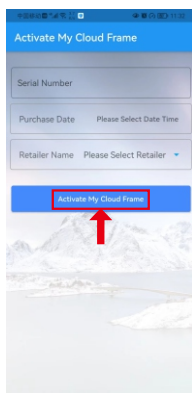
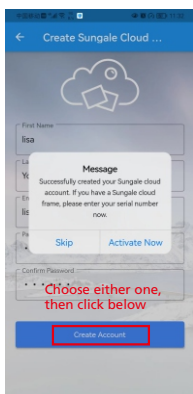
4

Register Your Cloud Frame



Step 4: The next screen will ask if you want to activate your cloud frame right away, choose to activate now, fill in your cloud frame serial number, and a few purchase information, then tap the button underneath.

Now you're all set, you can click the "I have registered" on your frame to initiate your cloud album.

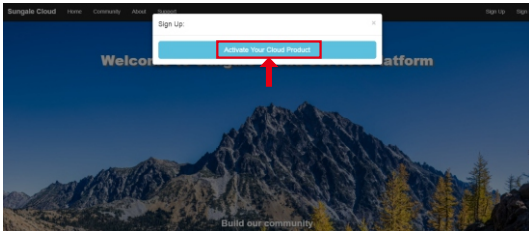
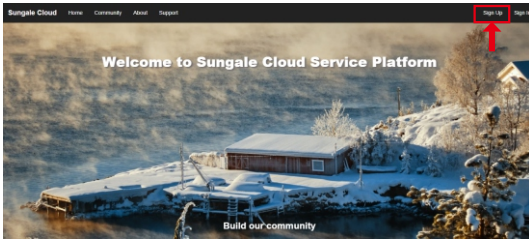


4

Register Your Cloud Frame

2) Register on your computer

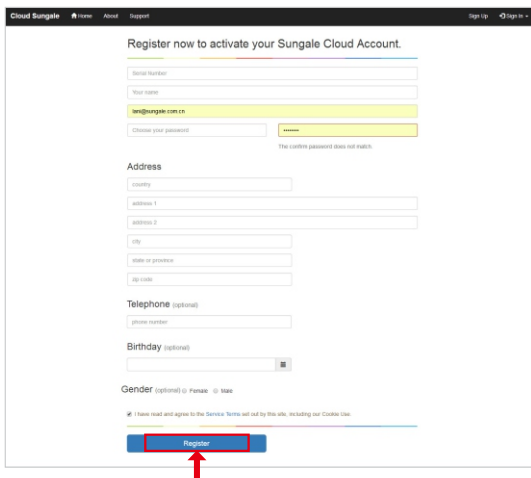
Open browser, type in "cloud.sungale.com", you will find below interface. Click on "Sign Up", then click on "Activate Your Cloud Product".



You will be prompted to register the frame by providing the serial number from your frame as well as some basic personal information, then click "register" button.

4

Register Your Cloud Frame



The screenshot shows the registration page for Sungale. At the top, it says "Register now to activate your Sungale Cloud Account." Below this are several input fields: "Serial Number", "Your name", "Email" (pre-filled with "lms@sungale.com.cn"), and "Choose your password" (with a confirmation field below it). A message "The confirm password does not match." is displayed between the password fields. The "Address" section includes fields for "country", "address 1", "address 2", "city", "state or province", and "zip code". The "Telephone (optional)" section has a "phone number" field. The "Birthday (optional)" section has a date picker. The "Gender (optional)" section has radio buttons for "Female" and "Male". At the bottom, there is a checkbox for "I have read and agree to the Service Terms set out by this site, including our Cookie Use." and a blue "Register" button, which is highlighted with a red box and a red arrow pointing to it from below.

Now your cloud account is registered, and your cloud frame is activated. Meanwhile you'll receive a verification email from Sungale, simply click the link in the email to finish the validation. If you get any issue with the verification, please email us at support@sungale.com to further assist.

Now you can tab "I have registered" button on your frame to access your cloud album.

5

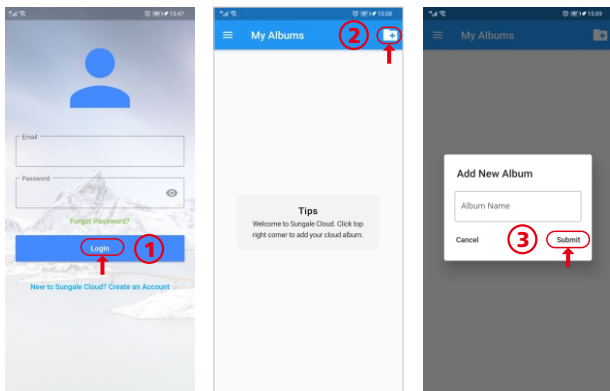
How to send photos to the Cloud Frame?

Open the "Sungale Cloud" App, input your account and password to log in.

Step 1: Login into your account.

Step 2: Tap  icon from the upper right hand corner.


Step 3: Input the album name and tap "Submit" button.



Step 4: Select the Album you want to add photos to.

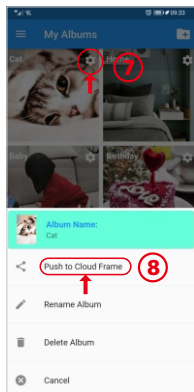
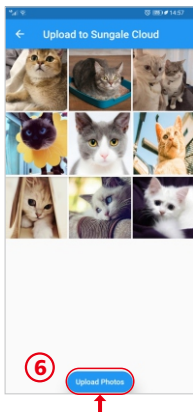
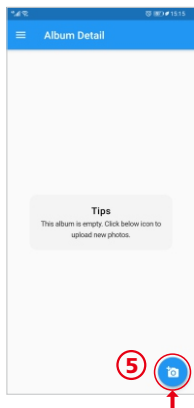
Step 5: Tap  icon to choose photos from your phone.

Step 6: After selecting the photos, tap "Upload Photos" to upload photos.

Step 7: Tap  icon then tap "Push to Cloud Frame",
Now the cloud album you pushed will appear on your cloud frame shortly.

5

How to send photos to the Cloud Frame?



6

Settings Menu Overview

APP Block



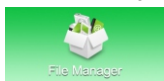
Where your downloaded & installed Apps and Google Play are located.

Web Browser



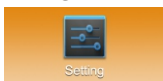
Where you can browse, surf and search the internet.

File Directory



Where to access your internal and external memory files.

Settings Menu



Where all your device settings are located for your frame.

7

Support

1. For manual download, FAQs and more supports: www.sungale.com
2. If you need help, please contact us:
Toll free number in the USA: 800-473-5156
Service email: service@sungale.com
3. Like us on Facebook - facebook.com/SungaleUSA
Follow us on YouTube.com/SungaleProducts for more usage tips and demonstrations.

