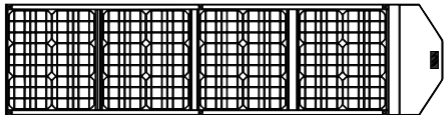
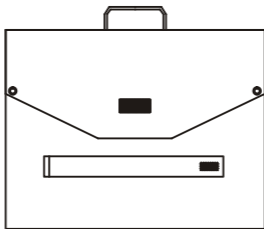


ALPHA DIGITAL

Portable Solar Charging Panel

USER MANUAL



Model: SFZD-40

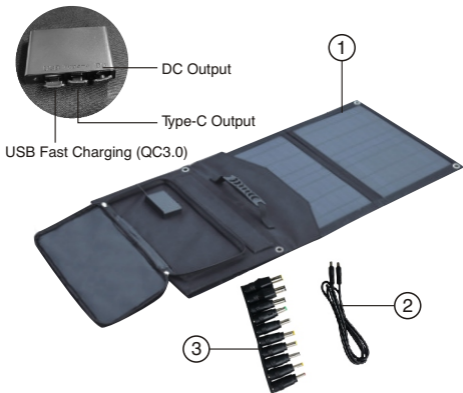
CONTENTS

- Introduction 1
- DC Connector instruction 2
- Operation Guidance 3
- Specifications 3
- Warning 4
- What You Get 4
- Statement 4
- FCC and safety information 4
- Support 4

Please read the instructions carefully before use

Introduction

Alpha Digital Portable Solar Panel charger is equipped with USB/QC3.0/ DC output ports and accessory socket, capable of charging most of your devices, including cell phone, tablet, in-car appliances, portable power station and 12V~18V storage battery. Apart from that, its TIR-C technology can automatically identify the required current of connected devices for optimum charging performance.



- ① 1 x Solar Charging Panel
- ② 1 x DC-to-DC Cable
- ③ 1 x 10-in-1 Connector for Laptop

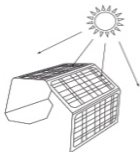
1 x 10-in-1 Connector for Laptop



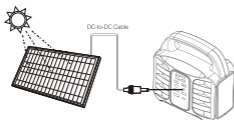
	DC connector size	Applicable computer
1	7.9*5.5*0.8mm	IBM / Lenovo
2	7.4*5.0*0.5mm	Dell / Compaq / HP
3	6.5*4.2*1.4mm	Sony / Fujitsu / Samsung
4	6.3*3.0mm	Acer / Toshiba / NEC
5	5.5*2.5mm	Lenovo / Asus / Acer / MSI / BenQ / Hedy / Toshiba / IBM / Gateway Malata / Haier
6	5.5*1.7mm	Shenzhen / Malata / Acer / Lenovo / Asus / BenQ / Toshiba / NEC...
7	5.5*3.2*1.1mm	Samsung
8	4.8*1.7mm	HP / Sony / NEC / Delta / Compaq / Sony / Asus
9	4.0*1.7mm	Asus / BenQ / Acer / Sony PSP / Navigator / HP (mini) Netbook / Tablet...
10	3.5*1.35mm	Sharp / Dell

Operation Guidance

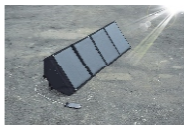
Step 1: Unfold the solar panel. Place it under direct sunlight and ensure it is facing towards the sun (No shelter including glass.)



Step 2: Connect electronic device to the USB output port or other appliances to the DC output with accessory cable come with the product. The red indicator light would be ON while charging your devices and appliances.



Charge for Portable Power Station



Charge for Mobile Phone, PC

Specifications

Max power	40W
Voltage/Current max	12~18V/3A(max)
Type-C Output	PD18W, 5V/9V/12V/15V/20V
USB QC3.0 Output	5V/3A; 9V/2A; 12V/1.5A
DC Output	18V/3A
Unfolded Size	1160*340*4mm
Folded Size	340*251*53mm
Weight	2.1KG

Warning

1. Please turn off the overheating protection of your device, before using the solar charging panel to charge it.
2. Do not bend the solar charging panel.
3. Ensure it is kept away from water or rain. If it is soaked, please dry it in the shade.
4. Always treat the monocrystalline solar charging panel with care. Do not drop or scratch the product. Ensure it is kept away from sharp objects.

Materials:

Oxford PVC fabric (Water Resistance IPX4)

Monocrystalline silicon PET solar panel

What You Get

- ① 1 x Solar Charging Panel
- ② 1 x DC-to-DC Cable
- ③ 1 x 10-in-1 Connector for Laptop
- ④ 1 x User Manual

Statement

All rights reserved. Reproduction in whole or in part without written permission is prohibited. All other trademarks are trademarks of their respective owners. Features and specifications are subject to change without notice.

FCC and safety information

WARNING!!! This equipment has been tested and found to comply with the limits of a Class B digital device, pursuant to part 15 of the FCC rules. These limits are designed to provide reasonable protection against harmful interference in a residential installation.

Support

For any support or comments concerning our products, please send an email to: service@sungale.com or toll free number in the USA: 800-473-5156